

HOLLY HUNT GREAT PLAINS

FABRIC NUMBER AND NAME

1325 / FLORA

DESCRIPTION

Woven at one of the finest fashion mills in Italy, this abstract floral is a showstopper. Flora features metallic yarns subtly woven with wool and mohair fibers to create a modern take on a floral. Suitable for drapery or backed for upholstery, this quality pairs beautifully with our metallic rugs and leathers.

CONTENT

34% Acrylic 24% Mohair 23% Nylon
13% Wool 4% Silk 2% Polyester

WIDTH

54" (137 cm)

REPEAT

18" Vertical 28" Horizontal
(46 cm Vertical 71 cm Horizontal)

COLORS AVAILABLE

- 01 Bone
- 02 Rosé
- 03 Silver Brown
- 04 Hunt
- 05 Onyx

TESTING INFORMATION

- Passes 15,000 Wyzenbeek Double Rubs
- Passes Cal 117
- Passes NFPA 260
- Passes BS 5852 Source 0 & 1 with FR rated foam

WEIGHT

Multi-use

FREIGHT CODE

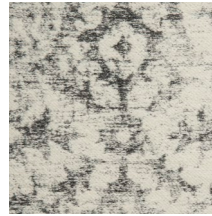
C

CLEANING & CARE

- Dry clean only.
- For optimal textile performance, maintain fabrics by gently vacuuming dirt before it becomes embedded, wipe or blot spills as soon as they occur, and spot clean soon after stains occur. When spot cleaning, always test a small, inconspicuous part of the furniture in case of discoloration or shrinkage. Avoid excessive brushing that may abrade the fibers.

BACKING RECOMMENDATION

Knit backing is recommended for use on HOLLY HUNT upholstered product. For all other upholstery, please consult your workroom.



01 BONE



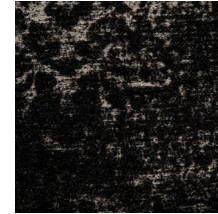
02 ROSÉ



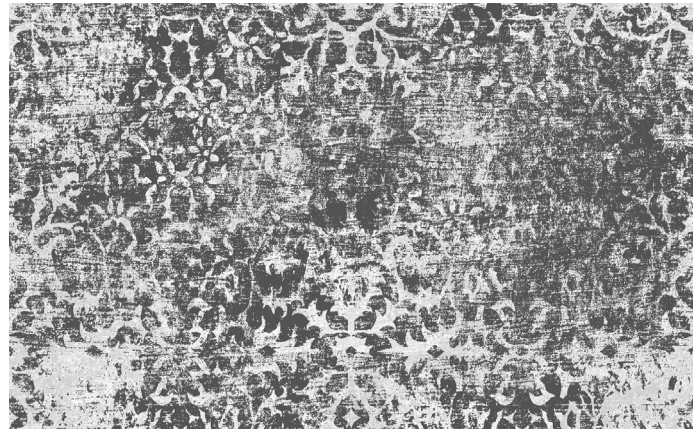
03 SILVER BROWN



04 HUNT



05 ONYX



REPEAT

