

HOLLY HUNT GREAT PLAINS

FABRIC NUMBER AND NAME

1965 / RAVENNA

DESCRIPTION

A great new upholstery weight with a wool look, Ravenna is offered in a long color line. Available in strong neutrals, along with subtle bold colors, this article schemes easily with existing Great Plains items. Ravenna would look stellar on the Caspian or Playa Sofa. Stocked pre-backed and with an SR finish for quick lead times.

CONTENT

61% Acrylic, 21% Polyester, 18% Cotton,

WIDTH

55" (140 cm)

FINISH

Stocked with a stain repellent finish

BACKING RECOMMENDATION

Pre-backed

COLORS AVAILABLE

- 01 Soft Light
- 02 Cloud
- 03 True Grey
- 04 Peat Heather
- 06 Turq
- 07 Midnight
- 08 Frost
- 09 Dream
- 10 Wheat
- 11 Warm & Cool

TESTING INFORMATION

- Passes 50,000 Wyzenbeek Double Rubs
- Passes CAL 117
- Passes NFPA 260

WEIGHT

Upholstery

FREIGHT CODE

C

CLEANING & CARE

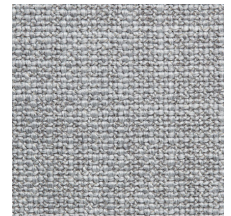
- Dry clean only.
- For optimal textile performance, maintain fabrics by gently vacuuming dirt before it becomes embedded, wipe or blot spills as soon as they occur, and spot clean soon after stains occur. When spot cleaning, always test a small, inconspicuous part of the furniture in case of discoloration or shrinkage. Avoid excessive brushing that may abrade the fibers.



01 SOFT LIGHT



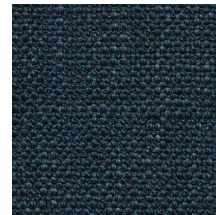
02 CLOUD



03 TRUE GREY



04 PEAT HEATHER



06 TURQ



07 MIDNIGHT



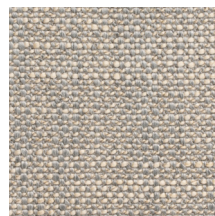
08 FROST



09 DREAM



10 WHEAT



11 WARM & COOL

