

HOLLY HUNT GREAT PLAINS

FABRIC NUMBER AND NAME

1671 / REVERIE

DESIGNED BY PAULA CROWN

DESCRIPTION

Featuring a linen base and an embroidered abstract design, Reverie launches in two stunning colorways this season!

The embroidery reimagines the traditional zari yarns, which are made of fine gold and silver, and typically used in Indian saris. The bronze and natural colorway schemes perfectly with the warmer tones in this collection, while the silver and white colorway compliments the icy tones this January. We look forward to seeing creative installations of this artistic textile!

CONTENT

Base: 100% Linen

Embroidery: 100% Jute Zari

WIDTH

54" (137 cm)

REPEAT

31" Vertical 48-1/2" Horizontal

(78-3/4 cm Vertical 123 cm Horizontal)

COLORS AVAILABLE

- 01 Bleached
- 02 Natural

WEIGHT

Window

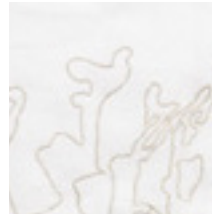
FREIGHT CODE

A

CLEANING & CARE

For optimal textile performance, maintain fabrics by gently vacuuming dirt before it becomes embedded, wipe or blot spills as soon as they occur, and spot clean soon after stains occur. When spot cleaning, always test a small, inconspicuous part of the furniture in case of discoloration or shrinkage.

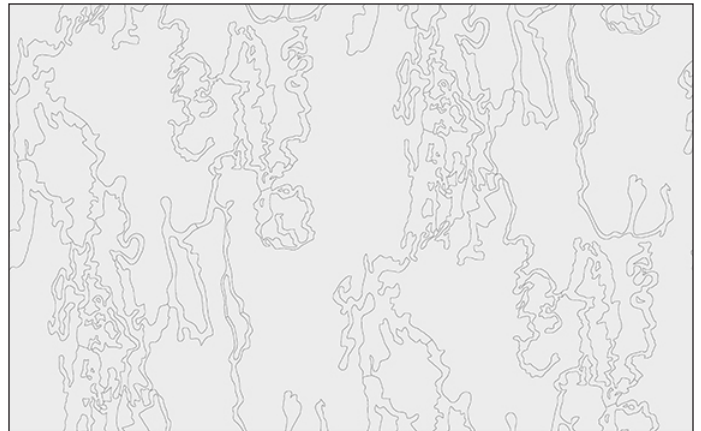
Avoid excessive brushing that may abrade the fibers.



01 BLEACHED



02 NATURAL



FULL REPEAT