

HOLLY HUNT GREAT PLAINS

FABRIC NUMBER AND NAME

1134 / FINE COMPANY

DESCRIPTION

Great Plains has been asked for a “raw silk” look that is good for upholstery. An anomaly to produce, this casual upholstery weight has the natural variations and weave that recalls a raw silk. The combination of a buried bouclé yarn, cotton warp, and dense backing structure gives it a rich, dense body perfect for contract use. This item is stocked with a stain repellent finish and is pre-backed for added convenience.

CONTENT

30% Cotton 30% Viscose 15% Acrylic
15% Polyester 10% Linen

WIDTH

55" (140 cm)

FINISH

- Stocked with a stain repellent finish
- The stain repellent finish is 100% non-toxic and is not harmful to the user or the environment

COLORS AVAILABLE

- 01 Alabaster
- 02 Natural
- 03 Cloud
- 04 Mint
- 06 Paladium

TESTING INFORMATION

- CAL 117: Pass
- NFPA 260: Class I
- Passes 100,000 Wyzenbeek Double Rubs
Suitable for residential and contract use
- Passes BS 5852 Source 0 & 1 with FR rated foam

WEIGHT

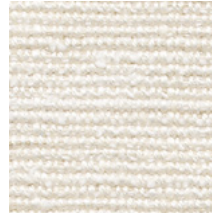
Upholstery

FREIGHT CODE

C

CLEANING & CARE

- Professional dry cleaning is recommended.
- For optimal textile performance, maintain fabrics by gently vacuuming dirt before it becomes embedded, wipe or blot spills as soon as they occur, and spot clean soon after stains occur. When spot cleaning, always test a small, inconspicuous part of the furniture in case of discoloration or shrinkage. Avoid excessive brushing that may abrade the fibers.



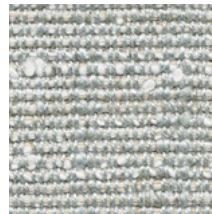
01 ALABASTER



02 NATURAL



03 CLOUD



04 MINT



06 PALADIUM

