

HOLLY HUNT LEATHER

SKU AND NAME

6013 / JET SET

DESCRIPTION

Jet Set is a mineral tanned leather with an all over embossed grain pattern. The artisanal process of hand tipping and polishing provides the beautiful and dimensional two-tone effect. Ideal for large-scale upholstery. Made from European hides.

CONTENT

Full cow hide

AVERAGE HIDE SIZE

45 SQ FT (4.1 SQ M)

AVERAGE LARGEST CUT SIZE

65" Vertical 52" Horizontal
(165 cm Vertical 132 cm Horizontal)

THICKNESS

1.2 - 1.4 mm

FINISH

Embossed grain

CHARACTERISTICS

- Durable leather suitable for high traffic environments
- All over, small scale embossed pattern
- European hides, handmade quality
- Semi-aniline, hand tipped leather
- Polyurethane top coat adds protection
- Custom colors available for 500 sq ft minimums
- Exclusive to HOLLY HUNT LEATHER
- In stock in Chicago, IL

COLORS AVAILABLE

- | | |
|---------------------|-------------------|
| • 01 Chamonix | • 27 Sun Valley |
| • 02 St. Moritz | • 28 Grand Canyon |
| • 03 Cannes | • 29 Cape Verde |
| • 04 Negril | • 30 Stockholm |
| • 09 St. Tropez | • 31 Highlands |
| • 10 Capri | • 32 Porto |
| • 11 Turks & Caicos | • 33 Verbier |
| • 12 French Riviera | • 36 Swan |
| • 13 Mustique | • 37 Opal |
| • 14 Mykonos | • 38 Marble |
| • 16 Seychelles | • 39 Dream |
| • 17 Anguilla | • 40 True Grey |
| • 19 Tanzania | • 41 Bright White |
| • 21 Istanbul | |

FREIGHT CODE

L

TESTING INFORMATION

- Passes 100,000 Wyzenbeek Double Rubs
- Passes NFPA 260
- Passes CAL 117
- Passes BS 5852 Source 0 & 1 with FR rated foam
- FR Treat to Pass BS 5862 Crib 5
- Breaking Strength & Elongation - ASTM D5034:
Avg of Warp 372 lbs, Avg of Fill 494 lbs
- AATCC 16 Colorfastness to Light: 60 Hours, Class 3.0
- Must be treated to pass aviation standards

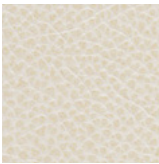
CLEANING & CARE

- The surface of this leather is protected with a polyurethane top coat that will repel most common stains when blotted immediately.
- Clean spots with a slightly damp cloth and rub gently in circular motions only, so that the leather tipping does not get damaged.
- When spot cleaning, always test a small, inconspicuous part of the furniture in case of discoloration.
- Specific leather treatment products can be recommended for tougher stains.

(colorways continued on page 2...)



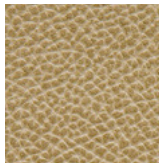
HOLLY HUNT LEATHER



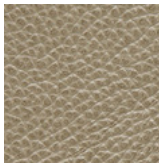
01 CHAMONIX



02 ST. MORTIZ



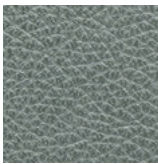
03 CANNES



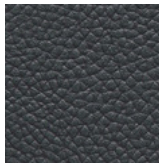
04 NEGRIL



28 GRAND
CANYON



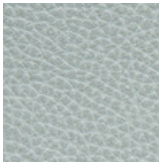
29 CAPE VERDE



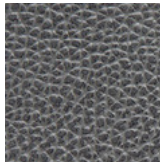
30 STOCKHOLM



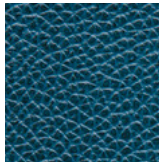
31 HIGHLANDS



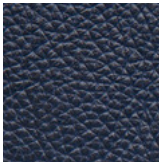
09 ST. TROPEZ



10 CAPRI



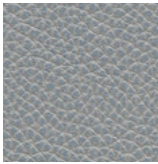
11 TURKS &
CAICOS



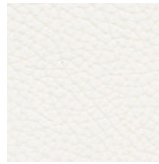
12 FRENCH
RIVIERA



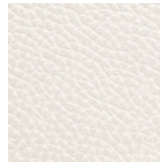
32 PORTO



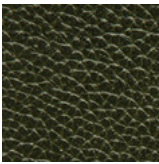
33 VERBIER



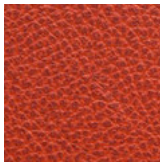
36 SWAN



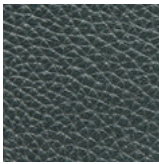
37 OPAL



13 MUSTIQUE



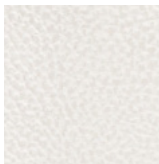
14 MYKONOS



16 SEYCHELLES



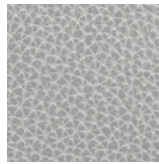
17 ANGUILLA



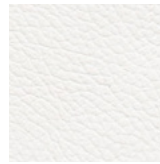
38 MARBLE



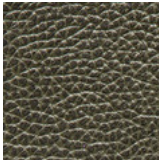
39 DREAM



40 TRUE GREY



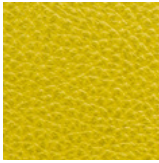
41 BRIGHT
WHITE



19 TANZANIA



21 ISTANBUL



27 SUN VALLEY