

# HOLLY HUNT GREAT OUTDOORS

## FABRIC NUMBER AND NAME

290 / CHERRY BLOSSOM

## DESCRIPTION

A new small-scale pattern for Great Outdoors, Cherry Blossom is ideal for a client looking for an elevated plain. Similar in look to Asterick, but with a more organic and playful feel, this item is offered in a long color line of both neutrals and pops of color.

## CONTENT

100% Solution Dyed Sunbrella® Yarns

## WIDTH

54" (137 cm)

## COLORS AVAILABLE

- 01 White Cap
- 02 Golden
- 03 Undertow
- 04 Bay Blue
- 05 Indigo
- 06 Morganite

## TESTING INFORMATION

- Passes 100,000 Wyzenbeek Double Rubs
- Passes CAL 117
- Passes NFPA 260

## WEIGHT

Upholstery

## FREIGHT CODE

C

## CLEANING & CARE

- Do not Dry Clean
- 100% Solution Dyed fibers are kidproof, dyed-through, easy to clean and don't fade!
- Maintain fabrics by brushing off dirt before it becomes embedded, wipe up spills as soon as they occur or spot clean soon after stains occur.
- Spot clean only with a soft sponge or cloth. Do not use a brush as it may abrade the fibers. The delicate weave and fine denure of the yarns can break when cleaned with rough bristles.

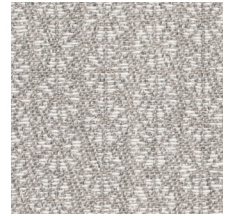
Extensive cleaning instructions available at [www.hollyhunt.com](http://www.hollyhunt.com).



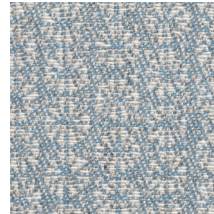
01 WHITE CAP



02 GOLDEN



03 UNDERTOW



04 BAY BLUE



05 INDIGO



06 MORGANITE

