

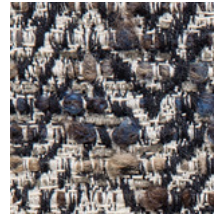
HOLLY HUNT GREAT PLAINS

FABRIC NUMBER AND NAME

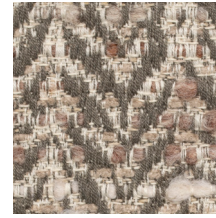
3827 / HERRINGBONE TWEED

DESCRIPTION

Herringbone Tweed is a fashion-inspired heavy textured weave accented with colorful tones and neutral yarns. Offered in a range of colorways, this slub texture in gorgeous colors can easily pair with any solid or fine linen texture!



01 NAVY & TAUPE



02 PEAT HEATHER



03 GREYSCALE

CONTENT

58% Cotton 15% Acrylic 13% Wool
9% Polyamide 5% Rayon

WIDTH

54" (137 cm)

FINISH

Textile productions after August 2019 will be produced with a stain repellent finish. Older dyelots will not have this finish.

PERFORMANCE CHARACTERISTICS

Stocked with knit backing for convenience and added stability

COLORS AVAILABLE

- 01 Navy & Taupe
- 02 Peat Heather
- 03 Greyscale

TESTING INFORMATION

- Passes 18,000 Wyzenbeek Double Rubs
Recommended for light residential use
- Passes CAL 117 (2013)
- Passes NFPA 260
- Passes BS 5852 Source 0 & 1 with FR rated foam

WEIGHT

Upholstery

FREIGHT CODE

D

CLEANING & CARE

- Professional dry cleaning is recommended.
- For optimal textile performance, maintain fabrics by gently vacuuming dirt before it becomes embedded, wipe or blot spills as soon as they occur, and spot clean soon after stains occur. When spot cleaning, always test a small, inconspicuous part of the furniture in case of discoloration or shrinkage. Avoid excessive brushing that may abrade the fibers.

