

# HOLLY HUNT GREAT PLAINS

## FABRIC NUMBER AND NAME

3239 / CAPRI

## DESCRIPTION

Capri is a large-scale, botanical silkscreened and foiled velvet. This print is tamed by the subtle and elegant HOLLY HUNT palette. Ideal for use as draperies or upholstery, our creative director loves to use this on the Capri Lounge Chair.

## CONTENT

64% Viscose 36% Cotton

## WIDTH

55" (140 cm)

## REPEAT

27-1/2" Vertical

Full Width Horizontal

(70 cm Vertical 140 cm Horizontal)

## COLORS AVAILABLE

- 01 Rosé
- 02 Iced
- 03 Leaf

## WEIGHT

Midweight

## FREIGHT CODE

D

## TESTING INFORMATION

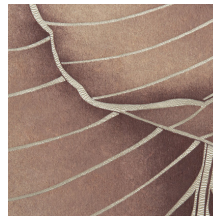
- Passes 50,000 Wyzenbeek Double Rubs
- FR Treat to pass Cal 117
- Passes NFPA 260

## CLEANING & CARE

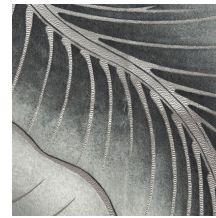
- For optimal textile performance, maintain fabrics by gently vacuuming dirt before it becomes embedded, wipe or blot spills as soon as they occur, and spot clean soon after stains occur. When spot cleaning, always test a small, inconspicuous part of the furniture in case of discoloration or shrinkage. Avoid excessive brushing that may abrade the fibers.

## BACKING RECOMMENDATION

Knit backing is recommended for use on Holly Hunt upholstery product. For all other upholstery, please consult your workroom.



01 ROSÉ



02 ICED



03 LEAF



REPEAT

