

HOLLY HUNT GREAT PLAINS

FABRIC NUMBER AND NAME

1149 / COMET

DESCRIPTION

Comet is a classic upholstery option offered in a nuanced color range. For clients who love the scale and texture of Valentino and Gala but are looking for a more subtle sheen and softer hand, this article is for you. We envision this in a diverse range of applications, from wall paneling to upholstery on our Io Chair!

CONTENT

35% Viscose 30% Polyester 25% Cotton 10% Linen

WIDTH

55" (140 cm)

FINISH

Stocked with a stain repellent finish

COLORS AVAILABLE

- 01 Pearl
- 02 Warm Silver
- 03 Graphite
- 04 Dew Drops
- 05 Silver Blue
- 06 New Camel

TESTING INFORMATION

- Passes 33,000 Wyzenbeek Double Rubs
- Passes CAL 117
- Passes NFPA 260

WEIGHT

Upholstery

FREIGHT CODE

C

CLEANING & CARE

- Gentle, professional dry cleaning with any solvent except trichloroethylene is recommended.
- For optimal textile performance, maintain fabrics by gently vacuuming dirt before it becomes embedded, wipe or blot spills as soon as they occur, and spot clean soon after stains occur. When spot cleaning, always test a small, inconspicuous part of the furniture in case of discoloration or shrinkage. Avoid excessive brushing that may abrade the fibers.

BACKING RECOMMENDATION

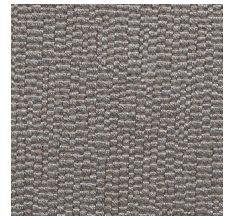
Pre-backed.



01 PEARL



02 WARM SILVER



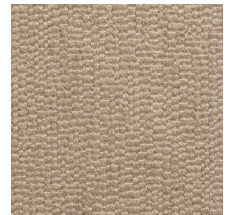
03 GRAPHITE



04 DEW DROPS



05 SILVER BLUE



06 NEW CAMEL

