



CARLISLE & CO.®

WALLCOVERINGS

— EST. 1998 —



TEXTILES

TAILORED TWEED

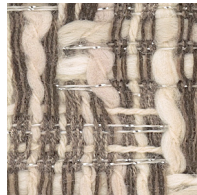
LX1090 Orchid

WIDTH:	36" (91,4 cm) Trimmed
REPEAT:	None
BACKING:	Non-Woven
FLAME RATING:	ASTM E84 Class B
BOLT SIZE:	8 yd (7,32 m)
MATCH:	Random
MINIMUM ORDER:	8 yd (7,32 m)
MAINTENANCE:	Soft Dry Brush

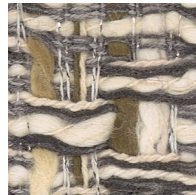
MORE COLORS



LX1090  
Orchid



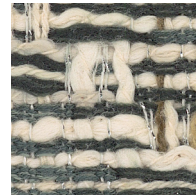
LX1091  
Taupe



LX1092  
Dove



LX1093  
Steel Blue



LX1094  
Juniper



LX1095  
Twilight

TO THE TRADE

US MARKETS

Exclusively through Holly Hunt

[hollyhunt.com](http://hollyhunt.com)

INTERNATIONAL MARKETS

800.220.6730

[carlisleco.com](http://carlisleco.com)