

HOLLY HUNT GREAT PLAINS

FABRIC NUMBER AND NAME

512 / NIRVANA

DESCRIPTION

For the client that loves Mirage, we are pleased to introduce NIRVANA. Launching in subtle metallic shades this quality will add a soft sheen to any space. It's ideal for high traffic or contract applications as it passes all fire codes and receives high abrasion results.

CONTENT

79% PVC 15% Cotton 6% Polyurethane

WIDTH

54" (139 cm)

COLORS AVAILABLE

- 01 Sea Pearl
- 02 Electrum
- 03 Burnished Bronze
- 04 Gold
- 05 Iron
- 06 Cognac
- 07 Loden

TESTING INFORMATION

- Passes 100,000 Wyzenbeek Double Rubs
- Passes CAL 117
- Passes NFPA 260
- Passes BS 5852 Source 0, 1, & Crib 5 With FR Rated Foam
- Passes IMO 2010 FTPC Part 8

WEIGHT

Upholstery

FREIGHT CODE

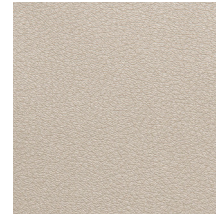
C

CLEANING & CARE

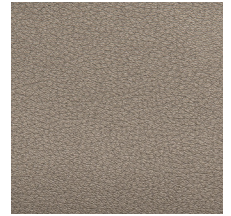
- Do not dry clean.
- Maintain fabrics by brushing off dirt before it becomes embedded, wipe up spills as soon as they occur or spot clean soon after stains occur.
- Spot clean only with a soft sponge or cloth. Do not use a brush as it may abrade the fibers. The delicate weave and fine denure of the yarns can break when cleaned with rough bristles.



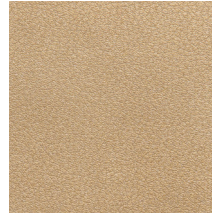
01 SEA PEARL



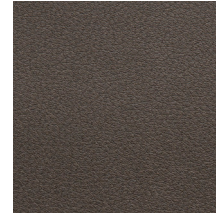
02 ELECTRUM



03 BURNISHED
BRONZE



04 GOLD



05 IRON



06 COGNAC



07 LODEN



Performance Textile