

HOLLY HUNT GREAT PLAINS

FABRIC NUMBER AND NAME

3829 / KARL

DESCRIPTION

Reminiscent of the iconic Chanel tweed, KARL is a unique take on a classic look. Made at one of the finest couture mills in the industry, this pattern showcases layers of fashion-forward yarns to create visual texture. KARL is a new offering for clients who love Coco and Herringbone Tweed!

CONTENT

52% Cotton 21% Acrylic 13% Wool 9% Nylon 5% Polyester

WIDTH

55" (140 cm)

FINISH

Stocked with a stain repellent finish

COLORS AVAILABLE

- 01 Graphite
- 02 Cacao
- 03 True Navy

WEIGHT

Upholstery

FREIGHT CODE

C

TESTING INFORMATION

- Passes 35,000 Wyzenbeek Double Rubs
- Passes CAL 117
- Passes NFPA 260
- Passes BS 5852 Passes Source 0 & 1 with FR Rated Foam

CLEANING & CARE

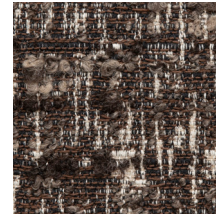
- Professional dry cleaning is recommended.
- For optimal textile performance, maintain fabrics by gently vacuuming dirt before it becomes embedded, wipe or blot spills as soon as they occur, and spot clean soon after stains occur. When spot cleaning, always test a small, inconspicuous part of the furniture in case of discoloration or shrinkage. Avoid excessive brushing that may abrade the fibers.

BACKING RECOMMENDATION

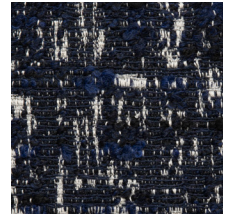
Pre-backed



01 GRAPHITE



02 CACAO



03 TRUE NAVY



Performance Textile