

# HOLLY HUNT GREAT PLAINS

## FABRIC NUMBER AND NAME

3288 / NEW COTTON

## DESCRIPTION

Introducing NEW COTTON, a fresh, updated workhorse velvet for the Great Plains collection. The quality's 10 fantastic colorways offer a wide range of neutrals and colors. Stocked with both a stain repellent and anti-crease finish, this velvet will be your new favorite because of its unique sheen and soft hand. Receiving 100,000 Wyzenbeek double rubs, you do not have to sacrifice luxury for performance.

## CONTENT

100% Cotton

## WIDTH

55" (140 cm)

## FINISH

Stocked with a stain repellent finish

## COLORS AVAILABLE

- 01 Soft Light
- 02 Natural State
- 03 Dusk
- 04 Elephant
- 05 Saffron
- 06 Clover
- 07 Deep Emerald
- 08 True Navy
- 09 Indian Summer
- 10 Mulberry

## TESTING INFORMATION

- Passes 100,000 Wyzenbeek Double Rubs
- Passes CAL 117
- Passes NFPA 260
- Passes BS 5852 Source 0 & 1 with FR rated foam
- FR treat to pass BS 5852 Crib 5

## WEIGHT

Upholstery

## FREIGHT CODE

D

## CLEANING & CARE

- Professional dry cleaning recommended.
- For optimal textile performance, maintain fabrics by gently vacuuming dirt before it becomes embedded, wipe or blot spills as soon as they occur, and spot clean soon after stains occur. When spot cleaning, always test a small, inconspicuous part of the furniture in case of furniture discoloration or shrinkage. Avoid excessive brushing that may abrade the fibers.



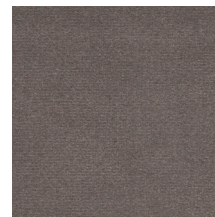
01 SOFT LIGHT



02 NATURAL STATE



03 DUSK



04 ELEPHANT



05 SAFFRON



06 CLOVER



07 DEEP EMERALD



08 TRUE NAVY



09 INDIAN SUMMER



10 MULBERRY

