

# HOLLY HUNT GREAT PLAINS

## FABRIC NUMBER AND NAME

3230 / SANCERRE STRIPE

## DESCRIPTION

Sancerre Stripe features a white-washed pattern similar to the receding ocean current on the sand. Muted colors are silk screen printed by hand on to a drapeable linen base.

## CONTENT

100% Linen

## WIDTH

54" (137 cm)

## REPEAT

28" Vertical 17-5/6" Horizontal  
(71 cm Vertical 45 cm Horizontal)

## COLORS AVAILABLE

- 01 Natural State
- 02 French Lavender
- 03 Blue Wash

## WEIGHT

Draperly

## FREIGHT CODE

A

## CLEANING & CARE

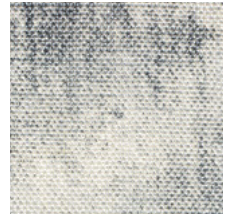
- Gentle, professional dry cleaning with any solvent except trichloroethylene is recommended.
- For optimal textile performance, maintain fabrics by gently vacuuming dirt before it becomes embedded, wipe or blot spills as soon as they occur, and spot clean soon after stains occur. When spot cleaning, always test a small, inconspicuous part of the furniture in case of discoloration or shrinkage. Avoid excessive brushing that may abrade the fibers.



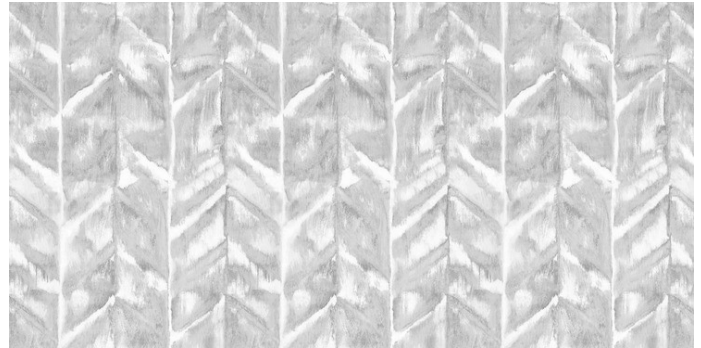
01 NATURAL STATE



02 FRENCH  
LAVENDER



03 BLUE WASH



FULL REPEAT SHOWN

