

# HOLLY HUNT GREAT PLAINS

**FABRIC NUMBER AND NAME**

2219 / IN THE WOODS

**DESCRIPTION**

In the Woods features linen in both the warp and fill with wool yarns subtly intertwined to create a hidden woodgrain pattern. The lightweight material creates a beautiful drape.

**CONTENT**

63% Linen 37% Wool

**WIDTH**

58" (147 cm)

**REPEAT**

8-1/4" Vertical 7-1/2 Horizontal  
(21 cm Vertical 19 cm Horizontal)

**COLORS AVAILABLE**

- 01 Birch
- 02 Aspen

**TESTING**

- FR treat to pass BS 5867-2 Type B

**WEIGHT**

Sheer

**FREIGHT CODE**

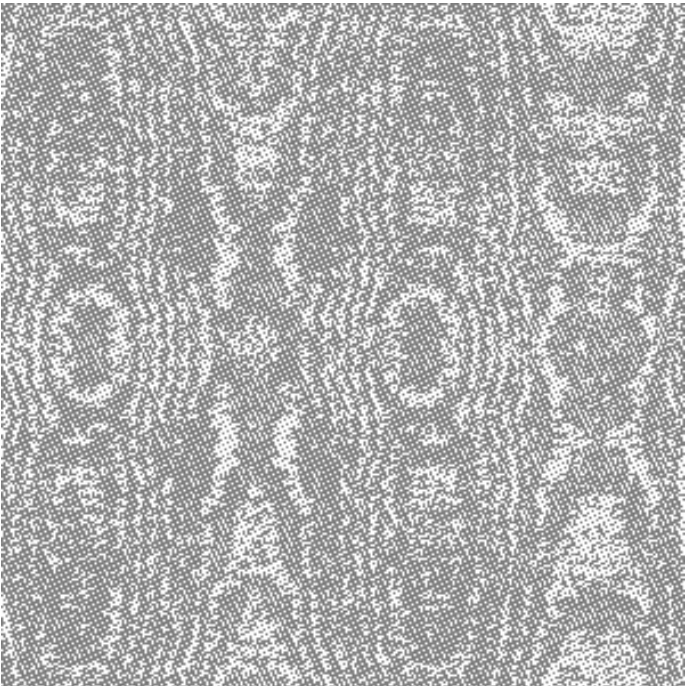
A

**CLEANING & CARE**

- Gentle, professional dry cleaning is recommended.
- A dry cleaning solution can be used to remove small stains by following the manufacturer's instructions. Do not remove a stain with water or by rubbing. When spot cleaning, always test a small, inconspicuous part in case of discoloration or shrinkage. Avoid excessive brushing that may abrade the fibers.
- When ironing or steaming, use a linen or cotton cloth as a barrier between the iron and the textile.



02 ASPEN



REPEAT

