

HOLLY HUNT GREAT PLAINS

FABRIC NUMBER AND NAME

1970 / ENTWINE

DESCRIPTION

ENTWINE showcases novelty yarns that offer both depth and a subtle sheen! Pre-backed, with a stain repellent finish and receiving 50,000 Wyzenbeek double rubs, this upholstery quality is a great spec for high traffic spaces. For clients who like Interlace, ENTWINE is a slightly chunkier basket weave construction with a multi-tonal effect that gives subtle dimension.

CONTENT

73% Cotton 14% Polyester 13% Acrylic

WIDTH

55" (140 cm)

FINISH

Stocked with a stain repellent finish

COLORS AVAILABLE

- 01 Natural
- 02 Warm & Cool
- 03 True Silver
- 04 Graphite

TESTING INFORMATION

- Passes 50,000 Wyzenbeek Double Rubs
- Passes CAL 117
- Passes NFPA 260
- Passes BS 5852 Source 0, 1, & Crib 5 with FR rated foam

WEIGHT

Upholstery

FREIGHT CODE

C

CLEANING & CARE

- Professional dry cleaning recommended.
- For optimal textile performance, maintain fabrics by gently vacuuming dirt before it becomes embedded, wipe or blot spills as soon as they occur, and spot clean soon after stains occur. When spot cleaning, always test a small, inconspicuous part of the furniture in case of furniture discoloration or shrinkage. Avoid excessive brushing that may abrade the fibers.

BACKING RECOMMENDATION

Pre-backed



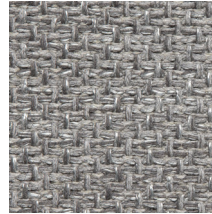
01 NATURAL



02 WARM & COOL



03 TRUE SILVER



04 GRAPHITE

