

HOLLY HUNT GREAT PLAINS

FABRIC NUMBER AND NAME

1556 / STREAMLINE

DESCRIPTION

We are thrilled to add a new drapery weight, with clean lines and a sleek stripe to the growing category of double width items. The interplay of the tonal yarns gives this fabric a dazzling sheen while the tight weave provides a semi-transparent look. Use lined or unlined depending on the light control desired!

CONTENT

47% Polyester 22% Rayon 22% Polyacrylic
9% Linen

WIDTH

126" (320 cm)
DOUBLE WIDTH

COLORS AVAILABLE

- 01 First Light
- 02 Silvered Streak
- 03 Cliffside

WEIGHT

Drapery

FREIGHT CODE

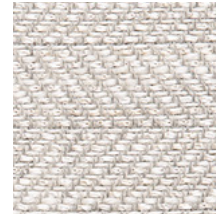
DW

CLEANING & CARE

- Professional dry cleaning is recommended.
- For optimal textile performance, maintain fabrics by gently vacuuming dirt before it becomes embedded, wipe or blot spills as soon as they occur, and spot clean soon after stains occur. When spot cleaning, always test a small, inconspicuous part of the furniture in case of discoloration or shrinkage. Avoid excessive brushing that may abrade the fibers.
- As necessary, steaming may be done from back of fabric in downward strokes. Always test a small corner of the fabric first. Keep a few inches of distance between the steamer and the fabric, and do not steam in one place of a fabric for too long.



01 FIRST LIGHT



02 SILVERED STREAK



03 CLIFFSIDE

