

HOLLY HUNT GREAT PLAINS

FABRIC NUMBER AND NAME

1964 / HANSEL

DESCRIPTION

Bound to be a new favorite, HANSEL is a dynamic addition to the Great Plains line. Ideal for Holly Hunt upholstery, this chunky basketweave is easy to use as it compliments a wide range of furniture pieces. For added convenience, this article is stocked with a stain repellent finish and comes pre-backed. A good fit for clients who love Heritage and Interlace.

CONTENT

51% Acrylic, 22% Cotton, 21% Polyester
5% Viscose, 1% Linen

WIDTH

55" (140 cm)

FINISH

Stocked with a stain repellent finish

BACKING RECOMMENDATION

Pre-backed

COLORS AVAILABLE

- 01 Soft Light
- 02 Cloud
- 03 True Grey
- 04 Golden Grey

TESTING INFORMATION

- Passes 45,000 Wyzenbeek Double Rubs
- Passes CAL 117
- Passes NFPA 260
- Passes BS 5852 Source 0 with FR Rated Foam
- FR treat to pass BS 5852 Source 1

WEIGHT

Upholstery

FREIGHT CODE

C

CLEANING & CARE

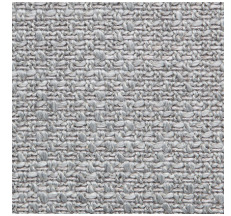
- Dry clean only.
- For optimal textile performance, maintain fabrics by gently vacuuming dirt before it becomes embedded, wipe or blot spills as soon as they occur, and spot clean soon after stains occur. When spot cleaning, always test a small, inconspicuous part of the furniture in case of discoloration or shrinkage. Avoid excessive brushing that may abrade the fibers.



01 SOFT LIGHT



02 CLOUD



03 TRUE GREY



04 GOLDEN GREY

