

HOLLY HUNT GREAT PLAINS

FABRIC NUMBER AND NAME

1650 / MISTY MORNING

DESCRIPTION

For clients who love Mountain Mist, we welcome a new double-wide quality, MISTY MORNING. The wool blend features modal yarns, giving it a silky hand and superior drapability. Launching in three subtle, natural colorways, this quality can be paired with New Side or Two Sides to complete your windows.

CONTENT

70% Wool 30% Micro Modal

WIDTH

126" (320 cm)

FINISH

Double Width

COLORS AVAILABLE

- 01 Winter White
- 02 Marble
- 03 Carerra

TESTING INFORMATION

- FR treat to pass BS 5867-2 Type B

WEIGHT

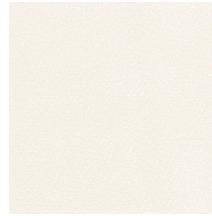
Window

FREIGHT CODE

DW

CLEANING & CARE

- For optimal textile performance, maintain fabrics by gently vacuuming dirt before it becomes embedded, wipe or blot spills as soon as they occur, and spot clean soon after stains occur. When spot cleaning, always test a small, inconspicuous part of the furniture in case of furniture discoloration or shrinkage. Avoid excessive brushing that may abrade the fibers.
- As necessary, steaming may be done from back of fabric in downward strokes. Always test a small corner of the fabric first. Keep a few inches of distance between the steamer and the fabric, and do not steam in one place of a fabric for too long.



01 WINTER WHITE



02 MARBLE



03 CARERRA

