

HOLLY HUNT GREAT OUTDOORS

FABRIC NUMBER AND NAME

138 / COACHELLA

DESCRIPTION

A new, basic upholstery weight, COACHELLA launches in three neutral colorways, all which work perfectly with our HHO furniture finishes. Ideal for large scale pieces like the Manta Ray Day Bed or the Tortuga sectional, pair with one of our exciting outdoor patterns or bright colors for a fun mix!

CONTENT

100% Solution Dyed Acrylic

WIDTH

54" (137 cm)

FINISH

Stocked with a stain repellent finish

COLORS AVAILABLE

- 01 Bright White
- 02 Desert
- 03 Perfect Grey

PERFORMANCE CHARACTERISTICS

- Fade-resistant to sunlight
- Chlorine resistant
- Bleach cleanable
- For use indoors or out

TESTING INFORMATION

- Passes CAL 117
- Passes NFPA 260

WEIGHT

Midweight

FREIGHT CODE

B

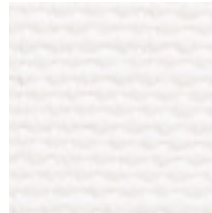
CLEANING & CARE

- Do not dry clean.
- 100% Solution Dyed fibers are kidproof, dyed-through, easy to clean and don't fade!
- Maintain fabrics by brushing off dirt before it becomes embedded, wipe up spills as soon as they occur or spot clean soon after stains occur.
- Spot clean only with a soft sponge or cloth. Do not use a brush as it may abrade the fibers. The delicate weave and fine denure of the yarns can break when cleaned with rough bristles.

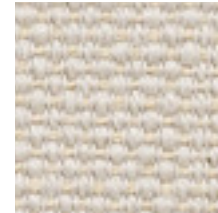
(Cleaning and care, continued...)

- If upholstered, be certain to remove all water or bleach after cleaning. A wet/dry extractor is recommended to thoroughly flush the affected area and remove all moisture.

Extensive cleaning instructions available at www.hollyhunt.com.



01 BRIGHT WHITE



02 DESERT



03 PERFECT GREY

