

# HOLLY HUNT GREAT PLAINS

## FABRIC NUMBER AND NAME

1178 / BONES

## DESCRIPTION

After the success of the Great Plains pattern Lake Como, we welcome another new linen based embroidery to the collection this season. Designed by Paul Mathieu, BONES is a beautiful new organic pattern. The design was derived from an original painting and translated into this dynamic textile. Executed in the colors of the original artwork, we imagine this textile making statement draperies and bedding. The soft neutrals in the embroidery easily pair with all of our new items this season.

## CONTENT

Base: 100% Linen

Embroidery: 67% Viscose, 33% Polyester

## WIDTH

50" (127 cm)

## REPEAT

15 1/2" Vertical x 12 1/2" Horizontal  
(40 cm Vertical x 32 cm Horizontal)

## COLORS AVAILABLE

- 01 Greige

## TESTING INFORMATION

- Passes CAL 117
- Passes NFPA 260
- Passes 33,000 Wyzenbeek Double Rubs

## WEIGHT

Midweight

## FREIGHT CODE

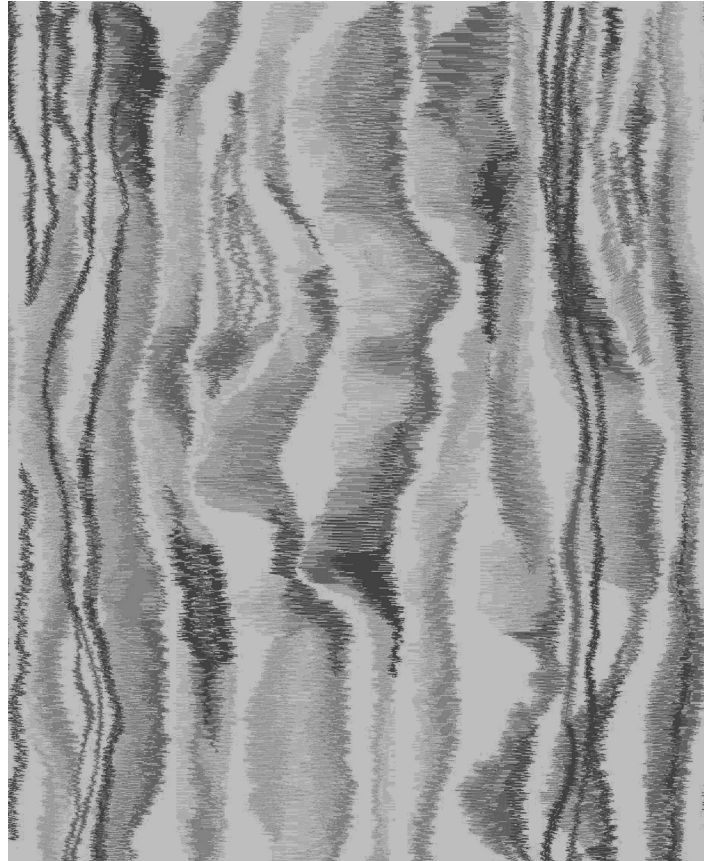
B

## CLEANING & CARE

- Dry clean only.
- For optimal textile performance, maintain fabrics by gently vacuuming dirt before it becomes embedded, wipe or blot spills as soon as they occur, and spot clean soon after stains occur. When spot cleaning, always test a small, inconspicuous part of the furniture in case of discoloration or shrinkage. Avoid excessive brushing that may abrade the fibers.



01 GREIGE



DESIGNED BY PAUL MATHIEU

