

HOLLY HUNT GREAT PLAINS

FABRIC NUMBER AND NAME

1279 / WORKHORSE

DESCRIPTION

We are excited to launch WORKHORSE, a new staple upholstery fabric. Stocked with an SR finish and pre-backed, this is a go-to for any large-scale upholstery piece. The basket weave texture is easy to use and pairs beautifully with any of our leathers or vinyls. Ideal for clients that love Sitting Pretty, this updated pattern comes in a variety of tones, both warm and cool.

CONTENT

58% Acrylic 30% Polyester 12% Viscose

WIDTH

55" (140 cm)

FINISH

Stocked with a stain repellent finish

COLORS AVAILABLE

- 01 Bright White
- 02 Cliffside
- 03 Limestone
- 04 True Grey
- 05 Thunder

TESTING INFORMATION

- Passes 100,000 Wyzenbeek Double Rubs
- Passes CAL 117
- Passes NFPA 260

WEIGHT

Upholstery

FREIGHT CODE

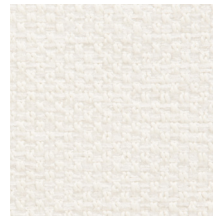
C

CLEANING & CARE

- Maintain fabrics by brushing off dirt before it becomes embedded, wipe up spills as soon as they occur or spot clean soon after stains occur.
- Spot clean only with a soft sponge or cloth. Do not use a brush as it may abrade the fibers. The delicate weave and fine denure of the yarns can break when cleaned with rough bristles. .

BACKING RECOMMENDATION

- Pre-backed



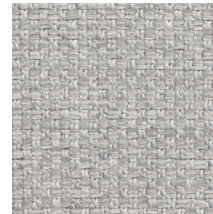
01 BRIGHT WHITE



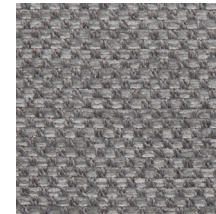
02 CLIFFSIDE



03 LIMESTONE



04 TRUE GREY



05 THUNDER

