

HOLLY HUNT GREAT PLAINS

FABRIC NUMBER AND NAME

1133 / SWEET DREAMS

DESCRIPTION

Sweet Dreams is a linenesque weave with a subtle sheen, clean surface and tight hand. This item is perfect for family room sofas as it is stocked with a stain repellent finish and is pre-backed for added lead time and selling convenience. The stain repellent finish is incorporated during textile production by an immersion process (vs. a topical spray) which allows for the most effective protection.

CONTENT

64% Viscose 20% Polyester 14% Cotton
2% Polyamide

WIDTH

55" (140 cm)

FINISH

- Stocked with a stain repellent finish

COLORS AVAILABLE

- 01 Ivory
- 02 Sand Dune
- 03 Harvest Gold
- 04 French Lavender
- 05 Rocky Coast
- 08 Cavern
- 09 Atlantic
- 10 Aloe
- 11 Silver Blue

TESTING INFORMATION

- Passes 35,000 Wyzenbeek Double Rubs
- NFPA 260
- Passes BS 5852 Source 0 & 1, with FR rated foam

WEIGHT

Upholstery

FREIGHT CODE

C

CLEANING & CARE

- Professional dry cleaning with any solvent except trichloroethylene is recommended.
- For optimal textile performance, maintain fabrics by gently vacuuming dirt before it becomes embedded, wipe or blot spills as soon as they occur, and spot clean soon after stains occur. When spot cleaning, always test a small, inconspicuous part of the furniture in case of discoloration or shrinkage. Avoid excessive brushing that may abrade the fibers.

BACKING RECOMMENDATION

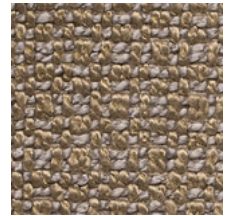
Pre-backed



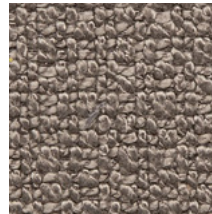
01 IVORY



02 SAND DUNE



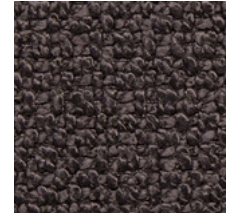
03 HARVEST GOLD



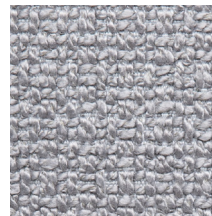
05 ROCKY COAST



04 FRENCH LAVENDER



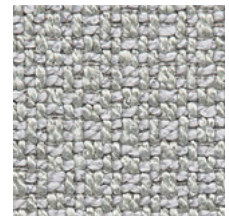
08 CAVERN



11 SILVER BLUE



09 ATLANTIC



10 ALOE

