

# HOLLY HUNT GREAT PLAINS

## FABRIC NUMBER AND NAME

4863 / STRING THEORY

## DESCRIPTION

Evoking a tropical and relaxed look, STRING THEORY launches in a sand and sea inspired palette. Perfect for windows where subtle privacy and interest is wanted, this weave structure is dense, yet open, and adds texture to any space.

## CONTENT

100% Linen

## WIDTH

54" (137 cm)

## COLORS AVAILABLE

- 01 White
- 02 Wheat
- 03 Natural
- 03 Steam

## TESTING INFORMATION

- FR treat to pass NFPA 701

## WEIGHT

Single Width

## FREIGHT CODE

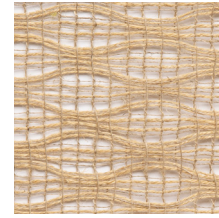
A

## CLEANING & CARE

- Dry Clean.
- Maintain fabrics by brushing off dirt before it becomes embedded, wipe up spills as soon as they occur or spot clean soon after stains occur.
- Spot clean only with a soft sponge or cloth. Do not use a brush as it may abrade the fibers. The delicate weave and fine denure of the yarns can break when cleaned with rough bristles.



01 WHITE



02 WHEAT



03 NATURAL



04 STEAM

