

HOLLY HUNT GREAT PLAINS

FABRIC NUMBER AND NAME

4054 / DREAM ON

DESCRIPTION

Our first ever double wide multi-use linen is DREAM ON. Launching in sophisticated neutrals, this item can be used for draperies, bedding, or light upholstery. The subtle ticking works both vertically and horizontally, and also acts as a neutral in any contemporary or transitional space.

CONTENT

100% Linen

WIDTH

122" (310 cm)

REPEAT

2 3/8" Vertical
(6 cm Vertical)

FINISH

Stocked with a stain repellent finish.

COLORS AVAILABLE

- 01 Bleached & Warm
- 02 Natural & Warm
- 03 Natural & Black

TESTING INFORMATION

- Passes 30,000 Wyzenbeek Double Rubs
- Passes CAL 117
- Passes NFPA 260

WEIGHT

Double Width

FREIGHT CODE

DW

CLEANING & CARE

- Dry Clean
- Maintain fabrics by brushing off dirt before it becomes embedded, wipe up spills as soon as they occur or spot clean soon after stains occur.
- Spot clean only with a soft sponge or cloth. Do not use a brush as it may abrade the fibers. The delicate weave and fine denure of the yarns can break when cleaned with rough bristles.
- As necessary, steaming may be done from back of fabric in downward strokes. Always test a small corner of the fabric first. Keep a few inches of distance between the steamer and the fabric, and do not steam in one place of a fabric for too long.

BACKING RECOMMENDATION

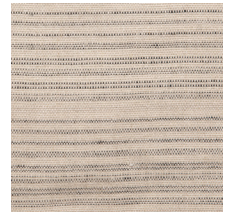
• Knit backing is recommended for use on HOLLY HUNT upholstered product. For all other upholstery, please consult your workroom.



01 BLEACHED &
WARM



02 NATURAL &
WARM



03 NATURAL &
BLACK



Performance Textile