



# CARLISLE & CO.

WALLCOVERINGS

— EST. 1998 —

## HIGH PERFORMANCE VINYL

# ARYA

Through artistic vision, this painterly interpretation evokes a sense of rolling mists with a soft, natural flow. This high-performance wallcovering features generously sized watery brushstrokes creating a unique textural canvas.

## LX1980 SANDSTONE



## SPECIFICATIONS

WIDTH:	55.5" (140,97 cm) Untrimmed Trims to 54" (137,16 cm)
REPEAT:	25.25" (64,13 cm)
MATCH:	Straight/Non-Reversible
BACKING:	Non-Woven
FLAME RATING:	ASTM E84 Class A
WEIGHT:	20 oz. Type II Vinyl
FINISH:	Antimicrobial Technology
MAINTENANCE:	Scrubable/Washable

## FEATURES

Non-Woven backed vinyl contains recycled content.

HPD & EPD Available

Printed with water-based inks.

Passes California CDPH Standard Method (Section 01350)

Can contribute towards LEED points.



Advanced antimicrobial technology made with EPA-registered ingredients.

## ADDITIONAL INFORMATION

Unique hanging instructions accompany all products. Hiring a professional installer for these specialty products is recommended.

## ORDERING:

PRICING: Priced by the yard.

MINIMUM ORDER: 15 yd (13,7 m)

ORDER INCREMENT: 5 yd (4,5 m)

STOCK: USA

Memos available upon request.

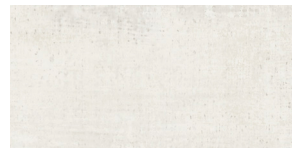
## MORE COLORS



LX1980 Sandstone



LX1981 Pebble



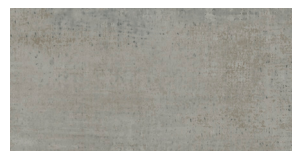
LX1982 Porcelain



LX1983 Fog



LX1984 Oyster



LX1985 Dove

## TO THE TRADE

### US MARKETS

Exclusively through Holly Hunt  
hollyhunt.com

### CANADA MARKETS

Crown Surface Solutions  
crownsurfacesolutions.com

### INTERNATIONAL MARKETS

800.220.6730  
carlisleco.com



CARLISLE & CO.

WALLCOVERINGS

— EST. 1998 —

HIGH PERFORMANCE VINYL

ARYA

LX1980 SANDSTONE



## TO THE TRADE

### US MARKETS

Exclusively through Holly Hunt  
[hollyhunt.com](http://hollyhunt.com)

### CANADA MARKETS

Crown Surface Solutions  
[crownsurfacesolutions.com](http://crownsurfacesolutions.com)

### INTERNATIONAL MARKETS

800.220.6730  
[carlisleco.com](http://carlisleco.com)