



CARLISLE & CO.

WALLCOVERINGS

— EST. 1998 —

NATURALS

BOTANICA BREEZE SISAL

Natural sun-bleached sisal fibers are woven onto a backing of casual, modern color in this fresh, airy grasscloth. The extensive designer palette creates the casual feeling of luxury living in any space.

LX1795 TWILIGHT



SPECIFICATIONS

WIDTH:	36" (91,44 cm) Trimmed
REPEAT:	None
MATCH:	Random
COMPOSITION:	Sisal on Paper Backing
FLAME RATING:	ASTM E84 Class A
MAINTENANCE:	Soft Dry Brush
BOLT SIZE:	8 yd (7,32 m)

ADDITIONAL INFORMATION

*LX1785 backing is non-woven

Unique hanging instructions accompany all products. Hiring a professional installer for these specialty products is recommended.

Color and texture may vary slightly due to the organic quality of the substrate material. These subtle differences should be celebrated as the mark of being hand-made.

ORDERING:

PRICING:	Priced by the linear yard.
MINIMUM ORDER:	8 yd (7,32 m)
ORDER INCREMENT:	8 yd (7,32 m)
STOCK:	USA

Memos available upon request.

MORE COLORS



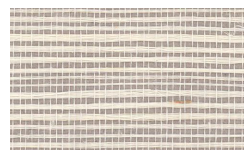
LX1785 Platinum



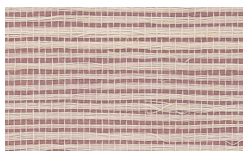
LX1786 Soft Silver



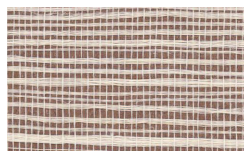
LX1787 Taupe



LX1788 Dove



LX1789 Cinnamon



LX1790 Brick



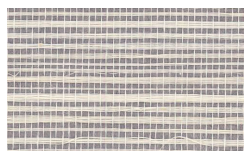
LX1791 Ash



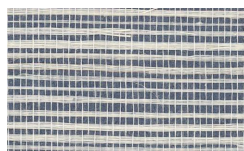
LX1792 Stone



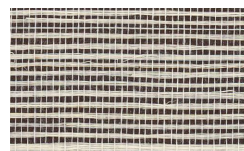
LX1793 Aquamarine



LX1794 Heather



LX1795 Twilight



LX1796 Onyx

TO THE TRADE

US MARKETS

Exclusively through Holly Hunt
hollyhunt.com

CANADA MARKETS

Crown Surface Solutions
crownsurfacesolutions.com

INTERNATIONAL MARKETS

800.220.6730
carlisleco.com