



CARLISLE & CO.

WALLCOVERINGS

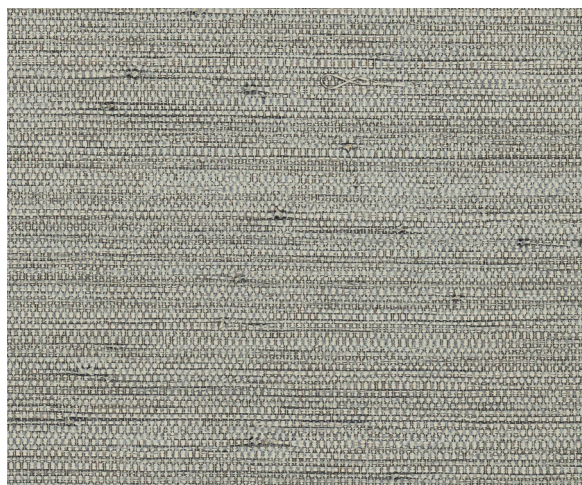
— EST. 1998 —

NATURALS

PALMYRA

Slender fronds of the raffia palm are hand woven to create this organic grasscloth. Hand embellished with a subtle metallic finish, this natural material is curated in a range of signature colors.

LX1608 STONE



SPECIFICATIONS

WIDTH:	36" (91,44 cm) Trimmed
REPEAT:	None
MATCH:	Random
BACKING:	Non-Woven
CONTENT:	70% Raffia, 30% Cotton
FLAME RATING:	ASTM E84 Class A
MAINTENANCE:	Soft Dry Brush
BOLT SIZE:	8 yd (7,32 m)

ADDITIONAL INFORMATION

Unique hanging instructions accompany all products. Hiring a professional installer for these specialty products is recommended.

Color and texture may vary slightly due to the organic quality of the substrate material. These subtle differences should be celebrated as the mark of being hand-made.

ORDERING:

PRICING:	Priced by the linear yard.
MINIMUM ORDER:	8 yd (7,32 m)
ORDER INCREMENT:	8 yd (7,32 m)
STOCK:	USA

Memos available upon request.

MORE COLORS



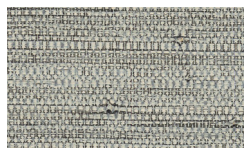
LX1605 Porcelain



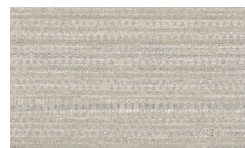
LX1606 Pebble



LX1607 Wicker



LX1608 Stone



LX1609 Oatmeal



LX1610 Taupe



LX1611 Dove



LX1612 Terracotta



LX1613 Anchor



LX1614 Steel Blue

TO THE TRADE

US MARKETS

Exclusively through Holly Hunt
hollyhunt.com

CANADA MARKETS

Crown Surface Solutions
crownsurfacesolutions.com

INTERNATIONAL MARKETS

800.220.6730
carlisleco.com