



CARLISLE & CO.

WALLCOVERINGS

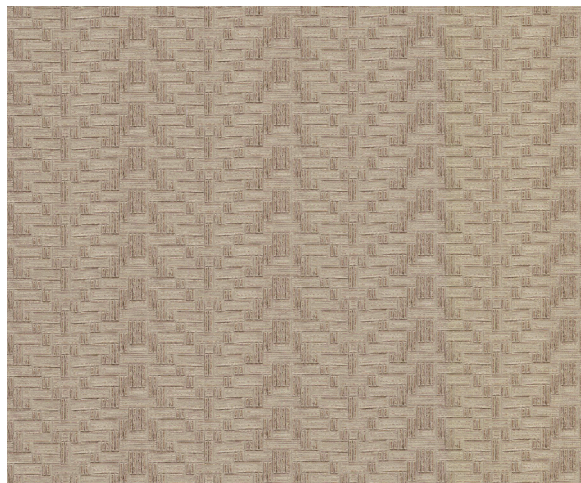
— EST. 1998 —

HIGH PERFORMANCE VINYL

INSIGNIA

A woven chevron features an intricate emboss across the surface of this deeply textured high-performance vinyl. A metallic accent adds glamorous dimensional effect to its natural inspiration.

LX1619 OATMEAL



SPECIFICATIONS

WIDTH:	54" (137,16 cm) Untrimmed Trims to 52" (132,08 cm)
REPEAT:	1.5" (3,81 cm)
MATCH:	Straight/Non-Reversible
BACKING:	Osnaburg
FLAME RATING:	ASTM E84 Class A
WEIGHT:	24 oz. Type II Vinyl
MAINTENANCE:	Scrubable/Washable

FEATURES

- HPD & EPD Available
- Printed with water-based inks.
- Passes California CDPH Standard Method (Section 01350)
- Can contribute towards LEED points.

ADDITIONAL INFORMATION

Unique hanging instructions accompany all products. Hiring a professional installer for these specialty products is recommended.

ORDERING:

PRICING:	Priced by the yard.
MINIMUM ORDER:	15 yd (13,5 m)
ORDER INCREMENT:	5 yd (4,5 m)
STOCK:	USA

Memos available upon request.

MORE COLORS



LX1615 Porcelain



LX1616 Taupe



LX1617 Dove



LX1618 Sandstone



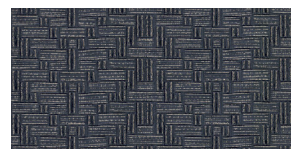
LX1619 Oatmeal



LX1620 Driftwood



LX1621 Anchor



LX1622 Steel Blue

TO THE TRADE

US MARKETS

Exclusively through Holly Hunt
hollyhunt.com

CANADA MARKETS

Crown Surface Solutions
crownsurfacesolutions.com

INTERNATIONAL MARKETS

800.220.6730
carlisleco.com