



CARLISLE & CO.

WALLCOVERINGS

— EST. 1998 —

HIGH PERFORMANCE VINYL

SISAL VINYL

This classic, natural sisal is replicated and reimagined in a durable, high-performance vinyl. The product is enhanced with a beautiful matte finish or a shimmering metallic background.

LX1544 SOFT SILVER



SPECIFICATIONS

WIDTH:	55.5" (140,97 cm) Untrimmed Trims to 54" (137,16 cm)
REPEAT:	Random
MATCH:	Non-Reversible
BACKING:	Non-Woven
FLAME RATING:	ASTM E84 Class A
WEIGHT:	20 oz. Type II Vinyl
FINISH:	Antimicrobial Technology
MAINTENANCE:	Scrubable/Washable

FEATURES

Non-Woven backed vinyl contains recycled content.

HPD & EPD Available

Printed with water-based inks.

Passes California CDPH Standard Method (Section 01350)

Can contribute towards LEED points.



Advanced antimicrobial technology made with EPA-registered ingredients.

ADDITIONAL INFORMATION

Unique hanging instructions accompany all products. Hiring a professional installer for these specialty products is recommended.

ORDERING:

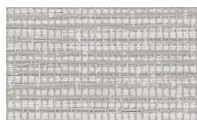
PRICING:	Priced by the yard.
MINIMUM ORDER:	15 yd (13,7 m)
ORDER INCREMENT:	5 yd (4,5 m)
STOCK:	USA

Memos available upon request.

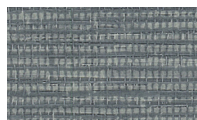
MORE COLORS



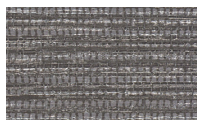
LX1544 Soft Silver



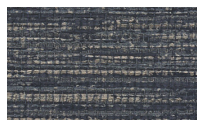
LX1545 Platinum



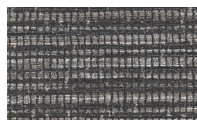
LX1546 Stone



LX1547 Anchor



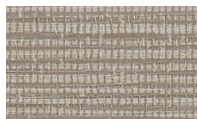
LX1548 Twilight



LX1549 Onyx



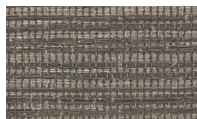
LX1550 Porcelain



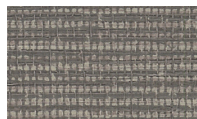
LX1551 Pebble



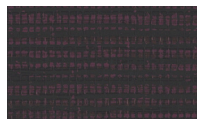
LX1552 Ochre



LX1553 Dove



LX1554 Driftwood



LX1555 Mulberry

TO THE TRADE

US MARKETS

Exclusively through Holly Hunt
hollyhunt.com

CANADA MARKETS

Crown Surface Solutions
crownsurfacesolutions.com

INTERNATIONAL MARKETS

800.220.6730
carlisleco.com