



# CARLISLE & CO.

WALLCOVERINGS

— EST. 1998 —

## HANDCRAFTED

# FREEHAND

This one-of-a-kind sculptural texture is printed on a tightly woven paperweave. By pairing innovation and quality, this pattern showcases exquisite authentic printing.

## LX1226 PORCELAIN



## SPECIFICATIONS

WIDTH:	27" (68,58 cm) Trimmed
REPEAT:	20.5" (52,07 cm)
MATCH:	Straight
COMPOSITION:	Paperweave with Surface Ink on Non-Woven Backing
FLAME RATING:	ASTM E84 Class B
MAINTENANCE:	Wipe Clean
BOLT SIZE:	9 yd (8,23 m)

## ADDITIONAL INFORMATION

Unique hanging instructions accompany all products. Hiring a professional installer for these specialty products is recommended.

Color and texture may vary slightly due to the organic quality of the substrate material. These subtle differences should be celebrated as the mark of being hand-made.

## ORDERING:

PRICING:	Priced by the linear yard.
MINIMUM ORDER:	9 yd (8,23 m)
ORDER INCREMENT:	9 yd (8,23 m)
STOCK:	USA

Memos available upon request.

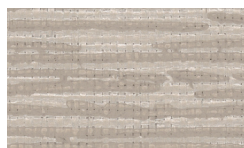
## MORE COLORS



LX1225 Platinum



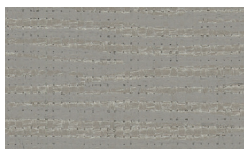
LX1226 Porcelain



LX1227 Dove



LX1228 Pebble



LX1229 Anchor



LX1230 Stone



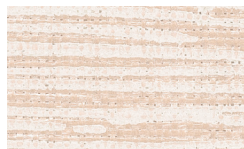
LX1231 Fog



LX1232 Sandstone



LX1233 Taupe



LX1234 Rosé



LX1235 Oatmeal



LX1236 Champagne

## TO THE TRADE

### US MARKETS

Exclusively through Holly Hunt  
hollyhunt.com

### CANADA MARKETS

Crown Surface Solutions  
crownsurfacesolutions.com

### INTERNATIONAL MARKETS

800.220.6730  
carlisleco.com