



CARLISLE & CO.

WALLCOVERINGS

— EST. 1998 —

HIGH PERFORMANCE VINYL

ABACA HORIZON VINYL

The purity of the Abaca weave inspires this durable, textural, high-performance vinyl interpretation of the most exquisite of natural grasses.

LX1427 TAUPE



SPECIFICATIONS

WIDTH:	55.5" (140,97 cm) Untrimmed Trims to 54" (137,16 cm)
REPEAT:	Random
MATCH:	Non-Reversible
BACKING:	Non-Woven
FLAME RATING:	ASTM E84 Class A
WEIGHT:	20 oz. Type II Vinyl
FINISH:	Antimicrobial Technology
MAINTENANCE:	Scrubable/Washable

FEATURES

Non-Woven backed vinyl contains recycled content.

HPD & EPD Available

Printed with water-based inks.

Passes California CDPH Standard Method (Section 01350)

Can contribute towards LEED points.



Advanced antimicrobial technology made with EPA-registered ingredients.

ADDITIONAL INFORMATION

Unique hanging instructions accompany all products. Hiring a professional installer for these specialty products is recommended.

ORDERING:

PRICING: Priced by the yard.

MINIMUM ORDER: 15 yd (13,7 m)

ORDER INCREMENT: 5 yd (4,5 m)

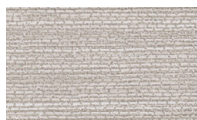
STOCK: USA

Memos available upon request.

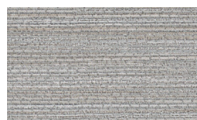
MORE COLORS



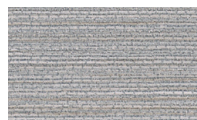
LX1420 Porcelain



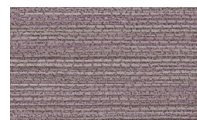
LX1421 Pebble



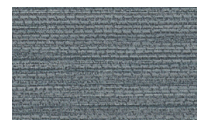
LX1422 Fog



LX1423 Ash



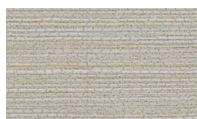
LX1424 Glacier



LX1425 Stone



LX1426 Sandstone



LX1427 Taupe



LX1428 Terracotta



LX1429 Dove



LX1430 Driftwood



LX1431 Onyx

TO THE TRADE

US MARKETS

Exclusively through Holly Hunt
hollyhunt.com

CANADA MARKETS

Crown Surface Solutions
crownsurfacesolutions.com

INTERNATIONAL MARKETS

800.220.6730
carlisleco.com