



# CARLISLE & CO.

WALLCOVERINGS

— EST. 1998 —

## HIGH PERFORMANCE VINYL

# ABACA HORIZON VINYL

The purity of the Abaca weave inspires this durable, textural, high-performance vinyl interpretation of the most exquisite of natural grasses.

## LX1424 GLACIER



## SPECIFICATIONS

WIDTH:	55.5" (140,97 cm) Untrimmed Trims to 54" (137,16 cm)
REPEAT:	Random
MATCH:	Non-Reversible
BACKING:	Non-Woven
FLAME RATING:	ASTM E84 Class A
WEIGHT:	20 oz. Type II Vinyl
FINISH:	Antimicrobial Technology
MAINTENANCE:	Scrubable/Washable

## FEATURES

Non-Woven backed vinyl contains recycled content.

HPD & EPD Available

Printed with water-based inks.

Passes California CDPH Standard Method (Section 01350)

Can contribute towards LEED points.



Advanced antimicrobial technology made with EPA-registered ingredients.

## ADDITIONAL INFORMATION

Unique hanging instructions accompany all products. Hiring a professional installer for these specialty products is recommended.

## ORDERING:

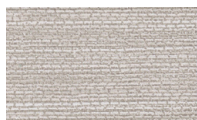
PRICING:	Priced by the yard.
MINIMUM ORDER:	15 yd (13,7 m)
ORDER INCREMENT:	5 yd (4,5 m)
STOCK:	USA

Memos available upon request.

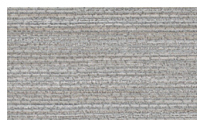
## MORE COLORS



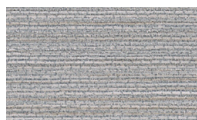
LX1420 Porcelain



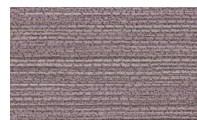
LX1421 Pebble



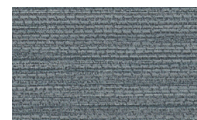
LX1422 Fog



LX1423 Ash



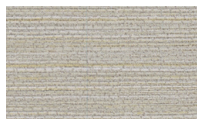
LX1424 Glacier



LX1425 Stone



LX1426 Sandstone



LX1427 Taupe



LX1428 Terracotta



LX1429 Dove



LX1430 Driftwood



LX1431 Onyx

## TO THE TRADE

### US MARKETS

Exclusively through Holly Hunt  
hollyhunt.com

### CANADA MARKETS

Crown Surface Solutions  
crownsurfacesolutions.com

### INTERNATIONAL MARKETS

800.220.6730  
carlisleco.com