



# CARLISLE & CO.

WALLCOVERINGS

— EST. 1998 —

## HIGH PERFORMANCE VINYL

# THE SILK EFFECT

Inspired by a silk textile, this luxurious high-performance vinyl creates a pleasant paneling effect on the wall. The luminous appearance of the emboss highlights its delicate natural texture.

### LX1344 SKY



## SPECIFICATIONS

WIDTH:	55.5" (140,97 cm) Untrimmed Trims to 54" (137,16 cm)
REPEAT:	25.25" (64,13 cm)
MATCH:	Straight/Non-Reversible
BACKING:	Non-Woven
FLAME RATING:	ASTM E84 Class A
WEIGHT:	20 oz. Type II Vinyl
FINISH:	Antimicrobial Technology
MAINTENANCE:	Scrubable/Washable

## FEATURES

Non-Woven backed vinyl contains recycled content.

HPD & EPD Available

Printed with water-based inks.

Passes California CDPH Standard Method (Section 01350)

Can contribute towards LEED points.



Advanced antimicrobial technology made with EPA-registered ingredients.

## ADDITIONAL INFORMATION

Unique hanging instructions accompany all products. Hiring a professional installer for these specialty products is recommended.

## ORDERING:

PRICING: Priced by the yard.

MINIMUM ORDER: 15 yd (13,7 m)

ORDER INCREMENT: 5 yd (4,5 m)

STOCK: USA

Memos available upon request.

## MORE COLORS



LX1335 Sandstone



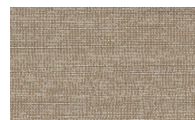
LX1336 Porcelain



LX1337 Wicker



LX1338 Ash



LX1339 Taupe



LX1340 Steel Blue



LX1341 Oatmeal



LX1342 Oyster



LX1343 Fog



LX1344 Sky



LX1345 Stone



LX1346 Twilight

## TO THE TRADE

### US MARKETS

Exclusively through Holly Hunt  
hollyhunt.com

### CANADA MARKETS

Crown Surface Solutions  
crownsurfacesolutions.com

### INTERNATIONAL MARKETS

800.220.6730  
carlisleco.com