

**HIGH PERFORMANCE VINYL**

# THE SILK EFFECT

Inspired by a silk textile, this luxurious high-performance vinyl creates a pleasant paneling effect on the wall. The luminous appearance of the emboss highlights its delicate natural texture.

## LX1341 OATMEAL



### SPECIFICATIONS

WIDTH:	55.5" (140,97 cm) Untrimmed Trims to 54" (137,16 cm)
REPEAT:	25.25" (64,13 cm)
MATCH:	Straight/Non-Reversible
BACKING:	Non-Woven
FLAME RATING:	ASTM E84 Class A
WEIGHT:	20 oz. Type II Vinyl
FINISH:	Antimicrobial Technology
MAINTENANCE:	Scrubable/Washable

### FEATURES

- Non-Woven backed vinyl contains recycled content.
- HPD & EPD Available
- Printed with water-based inks.
- Passes California CDPH Standard Method (Section 01350)
- Can contribute towards LEED points.



Advanced antimicrobial technology made with EPA-registered ingredients.

### ADDITIONAL INFORMATION

Unique hanging instructions accompany all products. Hiring a professional installer for these specialty products is recommended.

### ORDERING:

PRICING:	Priced by the yard.
MINIMUM ORDER:	15 yd (13,7 m)
ORDER INCREMENT:	5 yd (4,5 m)
STOCK:	USA

Memos available upon request.

## MORE COLORS



LX1335 Sandstone



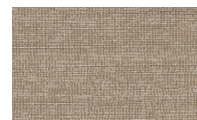
LX1336 Porcelain



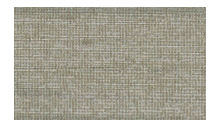
LX1337 Wicker



LX1338 Ash



LX1339 Taupe



LX1340 Steel Blue



LX1341 Oatmeal



LX1342 Oyster



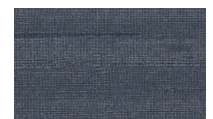
LX1343 Fog



LX1344 Sky



LX1345 Stone



LX1346 Twilight

## TO THE TRADE

### US MARKETS

Exclusively through Holly Hunt  
hollyhunt.com

### CANADA MARKETS

Crown Surface Solutions  
crownsurfacesolutions.com

### INTERNATIONAL MARKETS

800.220.6730  
carlisleco.com