



CARLISLE & CO.

WALLCOVERINGS

— EST. 1998 —

HANDCRAFTED

MYRIAD

Folds created from a ground of translucent non-woven and gently tipped with metallic foil form a horizontal motion in this hand-made pattern. These gently sculptural folds are a perfect mix of organic and urban influences.

LX1350 PORCELAIN



SPECIFICATIONS

WIDTH:	36" (91,44 cm) Trimmed
REPEAT:	None
MATCH:	Random
COMPOSITION:	Handmade Paper with Surface Foil on Non-Woven Backing
FLAME RATING:	ASTM E84 Class B
MAINTENANCE:	Soft Dry Brush
BOLT SIZE:	8 yd (7,32 m)

ADDITIONAL INFORMATION

Unique hanging instructions accompany all products. Hiring a professional installer for these specialty products is recommended.

Color and texture may vary slightly due to the organic quality of the substrate material. These subtle differences should be celebrated as the mark of being hand-made.

ORDERING:

PRICING:	Priced by the linear yard.
MINIMUM ORDER:	8 yd (7,32 m)
ORDER INCREMENT:	8 yd (7,32 m)
STOCK:	USA

Memos available upon request.

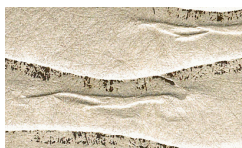
MORE COLORS



LX1350 Porcelain



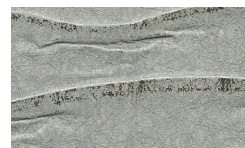
LX1351 Pebble



LX1352 Oatmeal



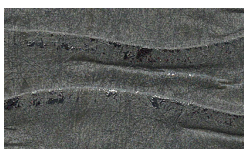
LX1353 Taupe



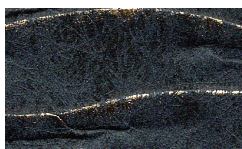
LX1354 Tidewater



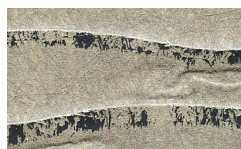
LX1355 Soft Silver



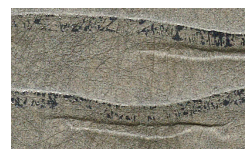
LX1356 Anchor



LX1357 Onyx



LX1358 Fog



LX1359 Dove

TO THE TRADE

US MARKETS

Exclusively through Holly Hunt
hollyhunt.com

CANADA MARKETS

Crown Surface Solutions
crownsurfacesolutions.com

INTERNATIONAL MARKETS

800.220.6730
carlisleco.com