

HOLLY HUNT LEATHER

SKU AND NAME

8002 / AMBASSADOR

DESCRIPTION

Ambassador is a luxurious split suede leather with an average hide size of 18 sq ft. This velvety suede is offered in a wide ranging palette of neutrals and colorful hues. The surface of this suede is treated with a stain resistant finish, for extra protection. Ambassador may also be used as a base for foils.

CONTENT

Split cow hide

AVERAGE HIDE SIZE

18 SQ FT (1.7 SQ M)

AVERAGE LARGEST CUT SIZE

47" Vertical x 38" Horizontal
(119 cm Vertical x 96 cm Horizontal)

THICKNESS

1.3 - 1.5 mm

FINISH

- Water repellent finish

COLORS AVAILABLE

- 01 Vapor
- 02 Chino
- 03 Desert
- 04 Fawn
- 05 Earth
- 06 Caribou
- 08 Currant
- 09 Gunmetal
- 10 Celeste
- 11 Satellite
- 12 Silver Stream
- 13 Canopy
- 14 Fern
- 16 Dusk

TESTING INFORMATION

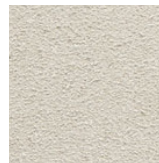
- CAL 117: Pass
- Passes 100,000 Wyzenbeek Double Rubs

FREIGHT CODE

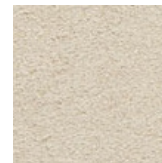
L

CLEANING & CARE

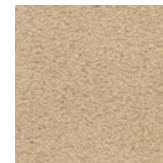
- The surface of this leather is protected with a water repellent finish.
- WET STAINS: HOLLY HUNT LEATHER recommends to quickly and gently absorb the spill with a paper towel, being very careful not to rub the liquid into the nap which can cause permanent stains. If cleaned and dried properly, the water repellent finish will help to avoid water-based liquids from penetrating the surface of the suede.
- DRY STAINS: For dry stains, it is recommended to vacuum the suede clean on a low power setting. Once cleaned, the suede should be brushed with a gentle brush, in the direction of the nap.
- For both wet and dry stains, never apply any kind of force during the cleaning process, or to use any chemical cleaning products including soaps, as they will likely lead to permanent staining and ruining of the suede's finish.



01 VAPOR



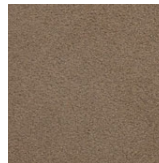
02 CHINO



03 DESERT



04 FAWN



05 EARTH



16 DUSK



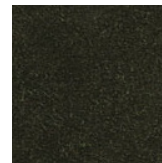
06 CARIBOU



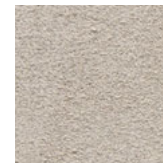
08 CURRANT



13 CANOPY



14 FERN



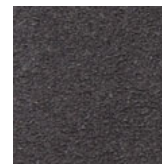
12 SILVER
STREAM



11 SATELLITE



10 CELESTE



09 GUNMETAL

