

HOLLY HUNT GREAT PLAINS

FABRIC NUMBER AND NAME

2154 / GARDEN GATE

DESCRIPTION

Garden Gate has a wonderful high-low texture. The pattern is created with a soft chenille resulting in a design that's very versatile. Use it for a cozy armchair, a kitchen banquette or a sofa perfect for lounging.

CONTENT

57% Cotton, 24% Linen, 14% Viscose, 5% Polyester

WIDTH

54" (137 cm)

REPEAT

6.75" Horizontal 8.75" Vertical
(17 cm Horizontal 22 cm Vertical)

COLORS AVAILABLE

- 01 Winter White
- 02 Pumice
- 03 Limestone
- 04 Sage
- 05 Saffron

TESTING INFORMATION

- Passes 15,000 Wyzenbeek Double Rubs
- Passes NFPA 260
- Passes BS 5852 source 0 with FR rated foam

WEIGHT

Upholstery

FREIGHT CODE

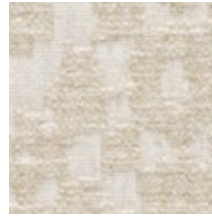
C

CLEANING & CARE

- For optimal textile performance, maintain fabrics by gently cleaning the surface regularly with a soft cloth, wipe or blot spills as soon as they occur, and spot clean soon after stains occur.

BACKING RECOMMENDATION

Knit backing is recommended for use on HOLLY HUNT upholstered product. For all other upholstery, please consult your workroom.



01 WINTER WHITE



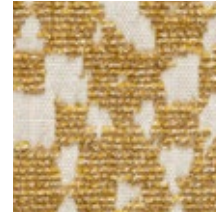
02 PUMICE



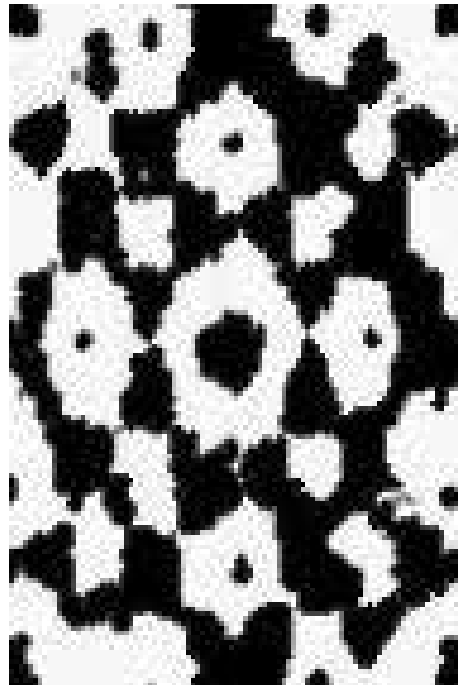
03 LIMESTONE



04 SAGE



05 SAFFRON



FULL REPEAT

