

# HOLLY HUNT GREAT PLAINS

## FABRIC NUMBER AND NAME

1989 / LIMEWASH

## DESCRIPTION

A blend of yarns creates this wool-like upholstery where color is not solid but has a marled appearance. This performance textile has a lovely hand with a surface that's soft and cozy.

## CONTENT

35% Acrylic, 35% Wool, 25% Cotton, 5% Nylon

## WIDTH

55" (139.5 cm)

## FINISH

Stocked with a stain repellent finish

## COLORS AVAILABLE

- 01 Daybreak
- 02 Warm Steel
- 03 Natural State
- 04 Sage
- 05 Saffron
- 06 Atlantic

## TESTING INFORMATION

- Passes 50,000 Wyzenbeek Double Rubs
- Passes CAL 117
- Passes NFPA 260
- Passes BS 5852 source 0 & 1 with FR rated foam

## WEIGHT

Upholstery

## FREIGHT CODE

C

## CLEANING & CARE

- For optimal textile performance, maintain fabrics by gently cleaning the surface regularly with a soft cloth, wipe or blot spills as soon as they occur, and spot clean soon after stains occur.

## BACKING RECOMMENDATION

Pre-backed



01 DAYBREAK



02 WARM STEEL



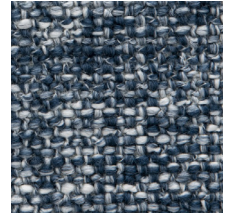
03 NATURAL STATE



04 SAGE



05 SAFFRON



06 ATLANTIC



Performance Textile