

HOLLY HUNT GREAT PLAINS

FABRIC NUMBER AND NAME

1479 / SONOMA

DESCRIPTION

A rustic and durable basket weave, Sonoma is a standalone classic linen. Woven by a Belgian artisanal mill, this heavyweight basketweave is hand-spun on site directly from the plants to create this casual texture. A perfect fit for clients looking for a heavy-bodied linen for sofas and lounge chairs. The double-beam construction adds strength and density. Some colors feature an undyed linen content and natural variations between dyelots will occur.

CONTENT

81% Linen 18% Cotton 1% Polyamide

WIDTH

54" (137 cm)

COLORS AVAILABLE

- 01 Natural
- 02 Bleached
- 03 Morning Mist
- 04 Half Bleached
- 05 Rose Quartz
- 08 Serenity
- 10 Valley Fog
- 13 Abyss
- 15 Hunt

PERFORMANCE CHARACTERISTICS

- Hidden warp/double-beam construction adds stability

TESTING INFORMATION

- Passes 50,000 Wyzenbeek Double Rubs
Recommended for medium to heavy duty residential and contract use
- Passes BS 5852 Source 0 with FR Rated foam

WEIGHT

Upholstery

FREIGHT CODE

C

CLEANING & CARE

- For optimal textile performance, maintain fabrics by gently vacuuming dirt before it becomes embedded, wipe or blot spills as soon as they occur, and spot clean soon after stains occur. When spot cleaning, always test a small, inconspicuous part of the furniture in case of furniture discoloration or shrinkage. Avoid excessive brushing that may abrade the fibers.

(cleaning and care, continued...)

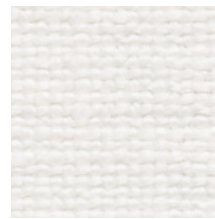
- Professional dry cleaning is recommended. If stains occur, use a dry cleaning foam to gently blot the affected area.
- Excessive rubbing of the fabric may cause pilling.
- Ironing is approved only on a low heat setting. Steaming is not recommended as it may cause shrinkage.

BACKING RECOMMENDATION

Pre-backed

NOTES

- Dyelots are subject to vary due to undyed linen content



02 BLEACHED



03 MORNING MIST



04 HALF BLEACHED



01 NATURAL



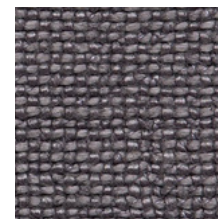
05 ROSE QUARTZ



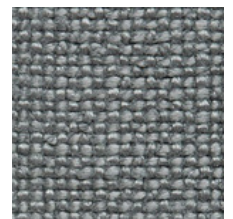
08 SERENITY



10 VALLEY FOG



13 ABYSS



15 HUNT

