

HOLLY HUNT GREAT PLAINS

FABRIC NUMBER AND NAME

1488 / ANTWERP

DESCRIPTION

A delicate striated surface showcases the versatility of this linen. The stria pattern's lovely handwoven quality would look beautiful as either drapery or upholstery.

CONTENT

98% Linen, 2% Nylon

WIDTH

55" (139.5 cm)

COLORS AVAILABLE

- 01 Vanilla
- 02 Clouded
- 03 Olive
- 04 Indigo
- 05 Flaxen
- 06 Cacao

TESTING INFORMATION

- Passes 50,000 Wyzenbeek Double Rubs
- Passes CAL 117
- Passes NFPA 260
- Passes BS 5852 source 0 & 1 with FR rated foam

WEIGHT

Upholstery

FREIGHT CODE

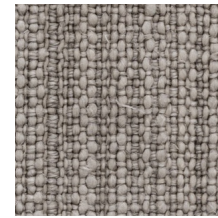
B

CLEANING & CARE

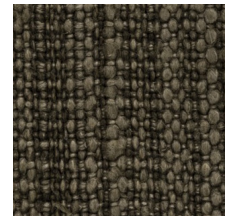
- For optimal textile performance, maintain fabrics by gently cleaning the surface regularly with a soft cloth, wipe or blot spills as soon as they occur, and spot clean soon after stains occur.



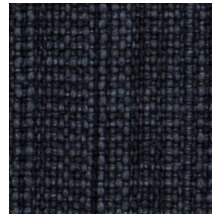
01 VANILLA



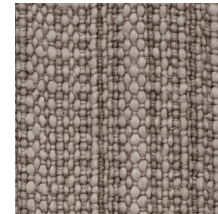
02 CLOUDED



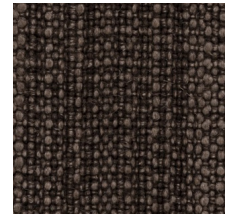
03 OLIVE



04 INDIGO



05 FLAXEN



06 CACAO

