

HOLLY HUNT GREAT PLAINS

FABRIC NUMBER AND NAME

1991 / DESERT ROSE

DESCRIPTION

Woven with a matelassé effect, Desert Rose is a stunning and modern take on floral patterns. The textured background and distinct colors create a wow factor, making this textile a unique interpretation of a rose.

CONTENT

51% Cotton, 18% Polyester, 15% Viscose, 10% Linen, 6% Nylon

WIDTH

56" (142 cm)

REPEAT

21.5" Vertical 28" Horizontal
(54.5 cm Vertical 71 cm Horizontal)

COLORS AVAILABLE

- 01 Warm & Cool
- 02 Rose
- 03 Saffron

TESTING INFORMATION

- Passes 50,000 Wyzenbeek Double Rubs
- Passes CAL 117
- Passes NFPA 260
- Passes BS 5852 source 0 with FR rated foam

WEIGHT

Upholstery

FREIGHT CODE

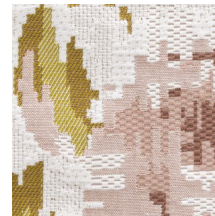
C

CLEANING & CARE

- For optimal textile performance, maintain fabrics by gently cleaning the surface regularly with a soft cloth, wipe or blot spills as soon as they occur, and spot clean soon after stains occur.



01 WARM & COOL



02 ROSE



03 SAFFRON



FULL REPEAT

