

HOLLY HUNT GREAT PLAINS

FABRIC NUMBER AND NAME

2200 / TWO SIDES

DESCRIPTION

A best selling midweight, Two Sides is a luxurious wool sateen perfect for upholstery or drapery applications. Two Sides is available in a large range of colors which are perfect to coordinate with other GREAT PLAINS textiles. Made from premium wool, yarn dyed, spun and woven in England.

CONTENT

100% Wool

WIDTH

54" (137 cm)

COLORS AVAILABLE

- 01 Sand
- 05 Charcoal
- 08 Putty
- 09 Silver Blue
- 12 Frost
- 13 Silver
- 15 Golden Tan
- 22 Warm Grey
- 25 Going Grey
- 26 New Camel
- 29 Seal
- 36 Optic White

TESTING INFORMATION

- Passes CAL 117
 - NFPA 260 : Class I
 - Passes 27,000 Wyzenbeek Double Rubs
- Recommended for light to medium duty residential use

WEIGHT

Midweight

FREIGHT CODE

B

CLEANING & CARE

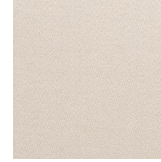
- For optimal textile performance, maintain fabrics by gently vacuuming dirt before it becomes embedded, wipe or blot spills as soon as they occur, and spot clean soon after stains occur.
- When spot cleaning, always test a small, inconspicuous part of the furniture in case of furniture discoloration or shrinkage. Avoid excessive brushing that may abrade the fibers.
- To remove stains, apply a damp cloth to the stain and gently rub to try and remove the affected area. A dry cleaning solution can also be used to remove stains.
- When ironing, a linen or cotton cloth should be used as a barrier between the iron and the textile.

NOTES

- Pre-approved quality for Nano-Tex® treatment. Please contact your GREAT PLAINS Textiles sales representative for more details.



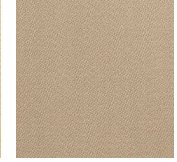
36 OPTIC WHITE



12 FROST



01 SAND



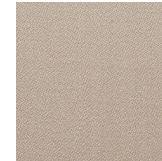
26 NEW CAMEL



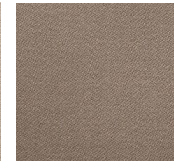
08 PUTTY



15 GOLDEN TAN



25 GOING GREY



22 WARM GREY



29 SEAL



05 CHARCOAL



13 SILVER



09 SILVER BLUE

