

HOLLY HUNT GREAT OUTDOORS

FABRIC NUMBER AND NAME

100 / FRESH CANVAS

CONTENT

100% Solution Dyed Acrylic

WIDTH

54" (137 cm)

FINISH

Stocked with a stain repellent finish

COLORS AVAILABLE

- 01 White
- 03 Stone
- 05 Suncatcher
- 07 Aquatic
- 08 Azure
- 09 Mediterranean
- 19 Charcoal
- 22 Silverfish
- 30 Aegean Sea
- 35 Evening Shadow
- 38 Silver Sail
- 39 Galapagos Grey
- 40 Tangerine
- 41 Caribbean

PERFORMANCE CHARACTERISTICS

- Fade-resistant to sunlight
- Chlorine resistant
- Colorfast
- Bleach cleanable
- Mold/mildew resistant
- For use indoors or out

TESTING INFORMATION

- NFPA 260: Class I
- CAL 117: Pass
- BS 5852 Source 0 with FR Rated Foam: Pass
- Passes 20,000 Wyzenbeek Double Rubs
Suitable for residential and contract use

WEIGHT

Midweight

FREIGHT CODE

B

CLEANING & CARE

- HOLLY HUNT Outdoor fabrics are kidproof, dyed-through, easy to clean and don't fade!
- For optimal textile performance, maintain fabrics by gently vacuuming dirt in the direction of the nap before it becomes embedded, wipe or blot spills as soon as they occur, and spot clean soon after stains occur. When spot cleaning, always test a small, inconspicuous part of the furniture in case of discoloration or shrinkage. Avoid excessive brushing

that may abrade the fibers.

LIQUID SPILLS

- Blot liquid spills as soon as they occur with a soft, dry cloth. Proceed with spot cleaning instruction if the spill leaves a stain upon drying.

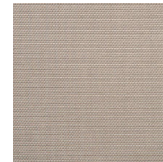
(cleaning and care, continued on page 2...)



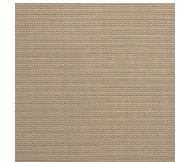
01 WHITE



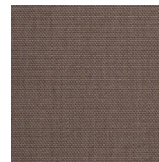
03 STONE



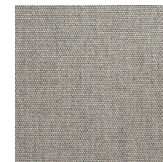
22 SILVERFISH



05 SUNCATCHER



19 CHARCOAL



38 SILVER SEA



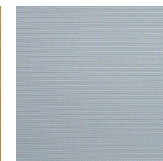
39 GALAPAGOS
GREY



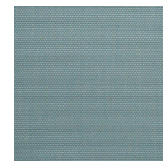
35 EVENING
SHADOW



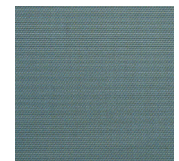
40 TANGERINE



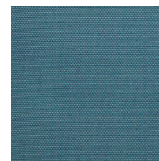
07 AQUATIC



08 AZURE



09 MEDITERRANEAN



30 AEGEAN SEA



41 CARIBBEAN



HOLLY HUNT GREAT OUTDOORS

SPOT CLEANING

- Apply a light mist of mild soap and water using a spray bottle.
- Work the solution into the stain by lightly scrubbing the area with a sponge or cloth. Be sure to use light pressure and repeated steps of this process to avoid breaking down the fibers and causing unnecessary wear.
- Rinse thoroughly to remove all soap residues.
- Blot excess moisture with a clean, soft towel or sponge.
- A handheld wet/dry extractor is recommended to thoroughly flush the affected area and remove all moisture.
- Air dry. Repeat beginning steps until all soap residue is removed.

STUBBORN STAINS

Mildew may grow on dirt and other foreign substances that are not removed from the fabric with regular maintenance.

- Prepare a diluted solution of one part bleach to two parts water.
- Spray on entire area and allow to soak into the fabric for 15 minutes.
- Remove stain with a sponge, clean towel or very soft bristle brush.
- Rinse thoroughly to remove all soap residues.
- Allow fabric to air dry. If stain and/or mildew are severe, bleach quantities may be increased.

NOTE: Repeated washing of these fabrics may reduce the effectiveness of the soil-resistant finish.

- Gentle, professional dry cleaning with any solvent except trichloroethylene is recommended for tough stains.

(In evaluating the services of a professional cleaner, it is recommended to inquire about their experience in working with and cleaning solution-dyed fabrics.)