

# HOLLY HUNT GREAT PLAINS

## FABRIC NUMBER AND NAME

1294 / SMOOTH TALKER

## DESCRIPTION

This chenille is so soft, you'll think it's velvet. Perfect for large-scale upholstery, Smooth Talker comes in an extensive color range, making it as versatile as it is refined.

## CONTENT

60% Polyester, 33% Linen, 7% Cotton

## WIDTH

55" (140 cm)

## COLORS AVAILABLE

- 01 Winter White
- 02 Carrera
- 03 Putty
- 04 Peat Heather
- 05 Ice Blue
- 06 Steel Blue
- 07 Rose
- 08 Sumac

## TESTING INFORMATION

- Passes 30,000 Wyzenbeek Double Rubs
- Passes CAL 117
- Passes NFPA 260
- Passes BS 5852 source 0 with FR rated foam

## WEIGHT

Upholstery

## FREIGHT CODE

C

## CLEANING & CARE

- Dry clean.
- For optimal textile performance, maintain fabrics by gently cleaning the surface regularly with a soft cloth, wipe or blot spills as soon as they occur, and spot clean soon after stains occur.

## BACKING RECOMMENDATION

Pre-Backed



01 WINTER WHITE



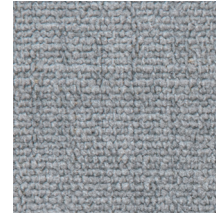
02 CARRERA



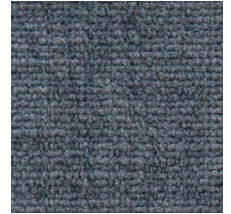
03 PUTTY



04 PEAT HEATHER



05 ICE BLUE



06 STEEL BLUE



07 ROSE



08 SUMAC



Performance Textile