

HOLLY HUNT GREAT OUTDOORS

FABRIC NUMBER AND NAME

166 / BACK AND FORTH

DESCRIPTION

A subtle basketweave with a mélange yarn gives this pattern a soft, multi-toned texture. A great match to In And Out or Comes And Goes and woven in polypropylene.

CONTENT

90% Polypropylene, 10% Acrylic

WIDTH

54" (137 cm)

COLORS AVAILABLE

- 01 Oyster
- 02 Warm & Cool
- 03 Chai
- 04 Warm Water
- 05 Ginger

PERFORMANCE CHARACTERISTICS

- Fade-resistant to sunlight
- Chlorine resistant
- Colorfast
- Bleach cleanable
- Mold/mildew resistant
- For use indoors or out

TESTING INFORMATION

- Passes 15,000 Wyzenbeek Double Rubs
- Passes CAL 117
- Passes NFPA 260
- Passes BS 5852 source 0 with FR rated foam

WEIGHT

Upholstery

FREIGHT CODE

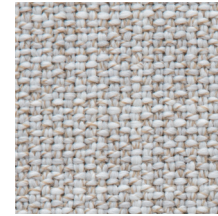
B

CLEANING & CARE

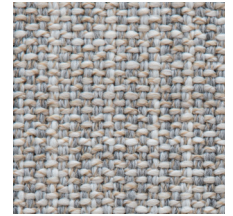
- 100% Solution Dyed fibers are kidproof, dyed-through, easy to clean and don't fade!
- Maintain fabrics by brushing off dirt before it becomes embedded, wipe up spills as soon as they occur or spot clean soon after stains occur.
- Spot clean only with a soft sponge or cloth. Do not use a brush as it may abrade the fibers. The delicate weave and the yarns can break when cleaned with rough bristles.



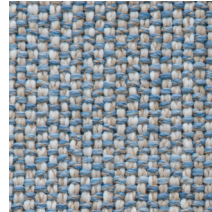
01 OYSTER



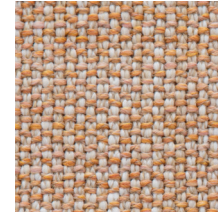
02 WARM & COOL



03 CHAI



04 WARM WATER



05 GINGER

