

## Hush/W1059

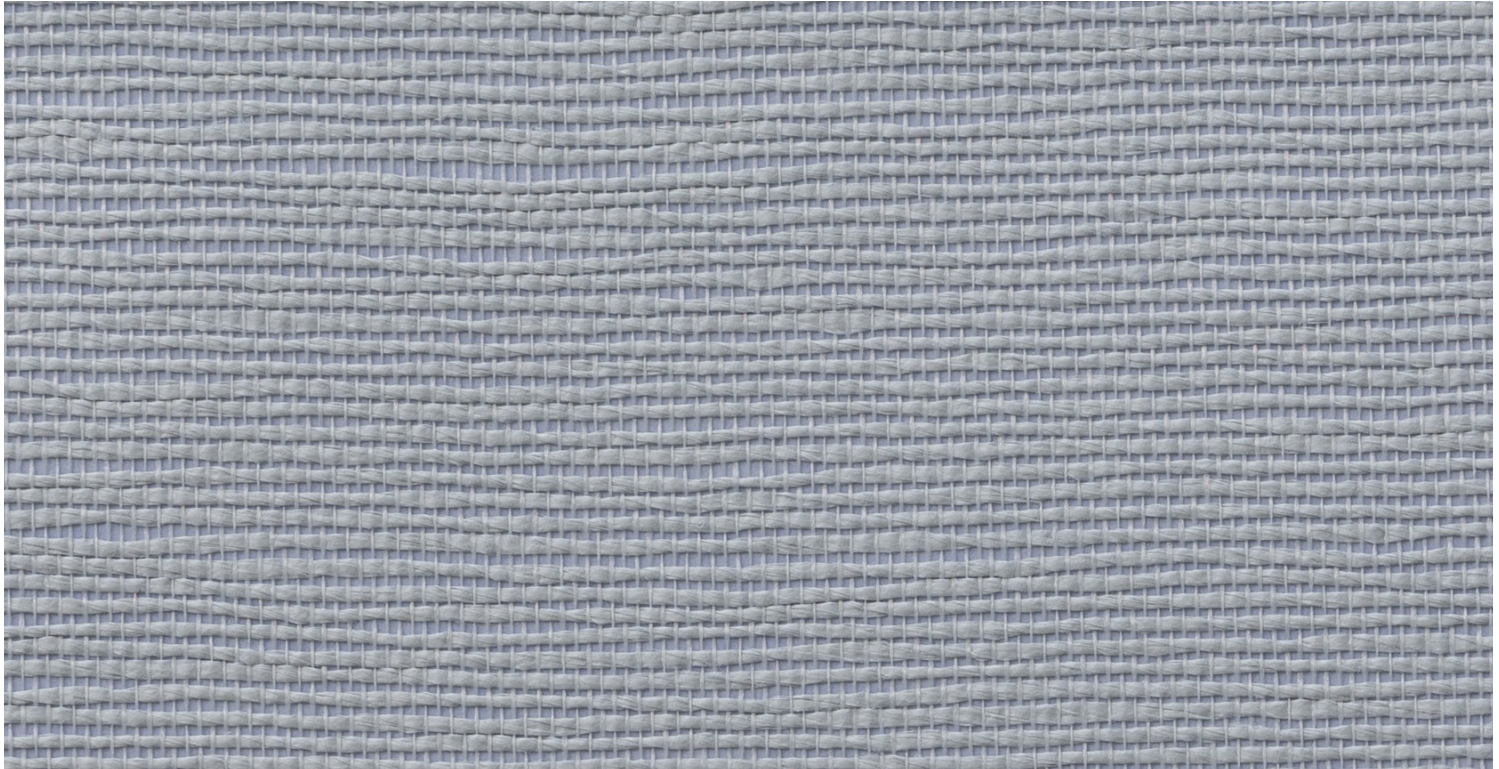
**Description:** Paperweave on  
Non-Woven Backing

**Dimensions:** 36" w x 8 yds  
(91.4 cm x 7.3 m)

**Edges:** Pretrimmed

**Flame Testing:** ASTM-E84 Class A

# HOLLY HUNT Walls



W1059/08 LAKE



FEATURED W1059/05 PEONY, BRIMSTONE CONSOLE AND MOSS AND LAM SUSPENSION 2 AND 5

Naturally Collection

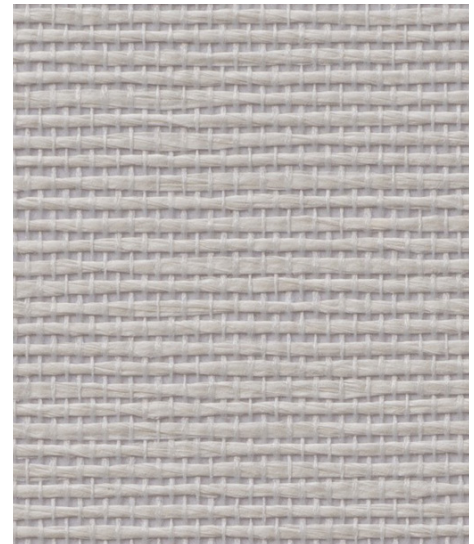
Hush/W1059



W1059/01 CLOUD



W1059/02 ALABASTER



W1059/03 OYSTER



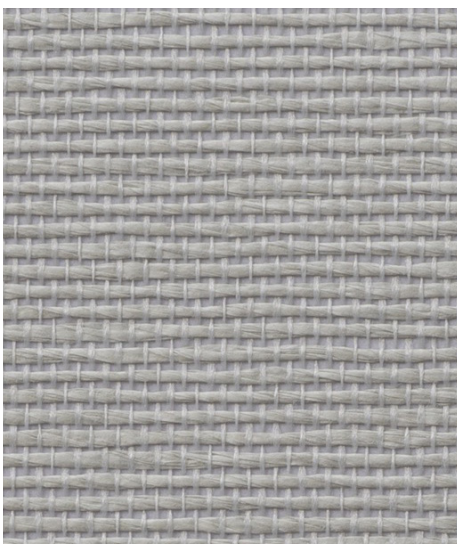
W1059/04 PORCELAIN



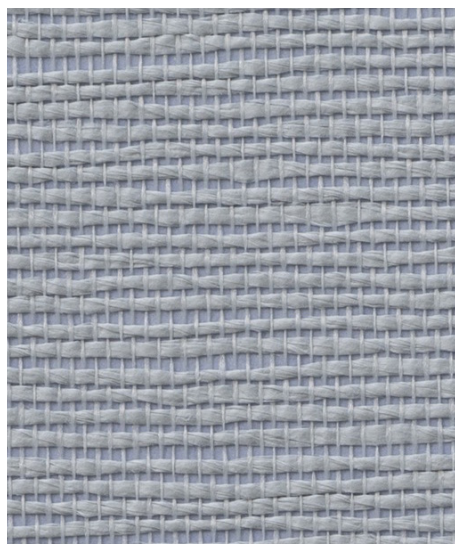
W1059/05 PEONY



W1059/06 ORCHID



W1059/07 STERLING



W1059/08 LAKE



W1059/09 PEWTER

SAMPLES AVAILABLE AT YOUR SHOWROOM AND [WWW.HOLLYHUNT.COM](http://WWW.HOLLYHUNT.COM) T 800 320 3145  
ALL DESIGNS ARE PROTECTED BY COPYRIGHT AND THE TRADEMARK LAWS OF THE U.S. HOLLY HUNT ENTERPRISES, INC.®

Naturally Collection