

# HOLLY HUNT GREAT PLAINS

## FABRIC NUMBER AND NAME

1264 / LUMIERE

## DESCRIPTION

This lively strie pattern is well-suited for many uses, ranging from accent upholstery to drapery. This pattern looks like linen but performs like acrylic with bleach cleanability and fade-resistant properties. Use Lumiere to add a bit of texture and energy to your interior.

## CONTENT

100% Acrylic

## WIDTH

55" (140 cm)

## REPEAT

16.38" Vertical 6.88" Horizontal  
(41.5 cm Vertical 17.5 cm Horizontal)

## COLORS AVAILABLE

- 01 Sand
- 02 Caravan

## TESTING INFORMATION

- Passes 30,000 Wyzenbeek Double Rubs
- Passes CAL 117
- Passes NFPA 260
- Passes BS 5852 source 0 with FR rated foam

## WEIGHT

Upholstery

## FREIGHT CODE

B

## CLEANING & CARE

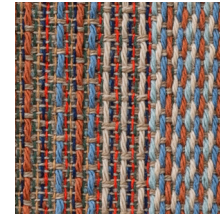
- Dry clean
- For optimal textile performance, maintain fabrics by gently cleaning the surface regularly with a soft cloth, wipe or blot spills as soon as they occur, and spot clean soon after stains occur.

## BACKING RECOMMENDATION

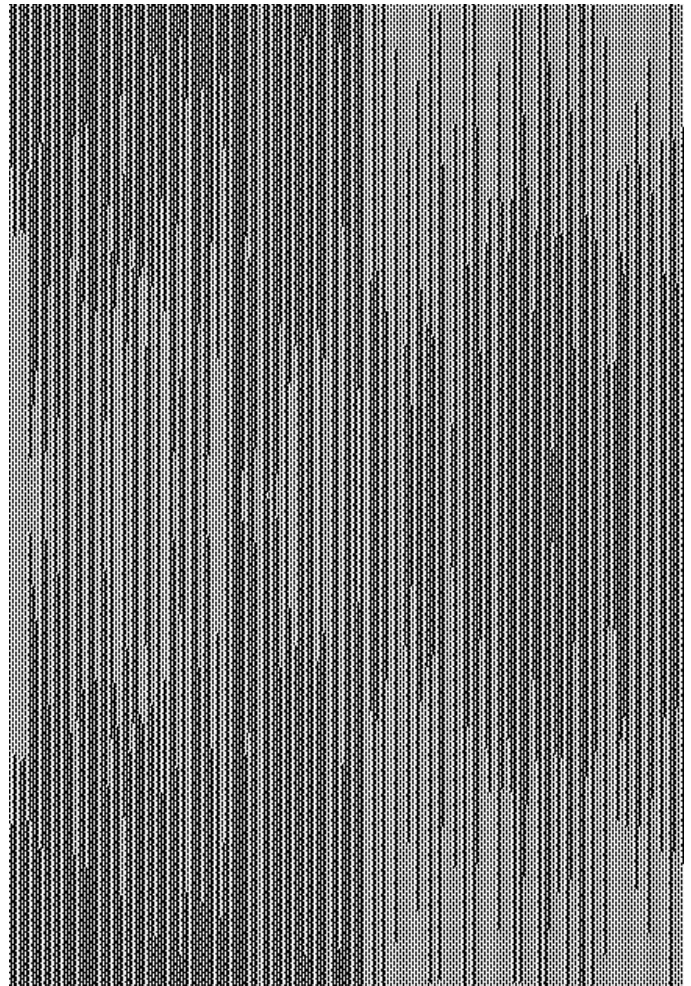
Knit backing is recommended for use on HOLLY HUNT upholstered product. For all other upholstery, please consult your workroom.



01 SAND



02 CARAVAN



FULL REPEAT

