

HOLLY HUNT GREAT PLAINS

FABRIC NUMBER AND NAME

1143 / RUSH HOUR

DESCRIPTION

A go-to for any project, we are excited to add RUSH HOUR, a simple, yet sophisticated new upholstery offered in five new colorways! Similar in look to the beloved Frost or Lakeshore, Rush Hour offers the same aesthetic, but with the characteristics of a performance textile. Coordinating seamlessly across the Great Plains line, this article will look great on a variety of HOLLY HUNT collection pieces. We envision it on everything from the Waterloo Sofa to the Stilt Coupe Lounge Chair.

CONTENT

25% Cotton 42% Acrylic 33% Polyester

FINISH

Stocked with a stain repellent finish

WIDTH

55" (140 cm)

COLORS AVAILABLE

- 01 Soft Light
- 04 Lilac Fog

PERFORMANCE CHARACTERISTICS

Stocked with knit backing for convenience and added stability

TESTING INFORMATION

- Passes 100,000 Wyzenbeek Double Rubs
- Passes Cal 117
- Passes NFPA 260

WEIGHT

Upholstery

FREIGHT CODE

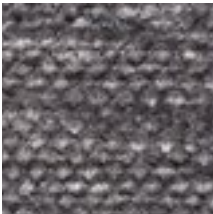
GP1-C

CLEANING & CARE

- Professional dry cleaning is recommended.
- For optimal textile performance, maintain fabrics by gently vacuuming dirt before it becomes embedded, wipe or blot spills as soon as they occur, and spot clean soon after stains occur. When spot cleaning, always test a small, inconspicuous part of the furniture in case of discoloration or shrinkage. Avoid excessive brushing that may abrade the fibers.



01 SOFT LIGHT



04 LILAC FOG

