

# HOLLY HUNT LEATHER

---

## SKU AND NAME

6013 / JET SET

## DESCRIPTION

Jet Set is a mineral tanned leather with an all over embossed grain pattern. The artisanal process of hand tipping and polishing provides the beautiful and dimensional two-tone effect. Ideal for large-scale upholstery. Made from European hides.

## CONTENT

Full cow hide

## AVERAGE HIDE SIZE

45 SQ FT (4.1 SQ M)

## AVERAGE LARGEST CUT SIZE

65" Vertical 52" Horizontal  
(165 cm Vertical 132 cm Horizontal)

## THICKNESS

1.2 - 1.4 mm

## FINISH

Embossed grain

## CHARACTERISTICS

- Durable leather suitable for high traffic environments
- All over, small scale embossed pattern
- European hides, handmade quality
- Semi-aniline, hand tipped leather
- Polyurethane top coat adds protection
- Custom colors available for 500 sq ft minimums
- Exclusive to HOLLY HUNT Leather
- In stock in Chicago, IL

## COLORS AVAILABLE

- |                     |                   |
|---------------------|-------------------|
| • 01 Chamonix       | • 27 Sun Valley   |
| • 02 St. Moritz     | • 28 Grand Canyon |
| • 04 Negril         | • 29 Cape Verde   |
| • 10 Capri          | • 30 Stockholm    |
| • 11 Turks & Caicos | • 31 Highlands    |
| • 12 French Riviera | • 32 Porto        |
| • 13 Mustique       | • 33 Verbier      |
| • 14 Mykonos        | • 36 Swan         |
| • 16 Seychelles     | • 37 Opal         |
| • 17 Anguilla       | • 38 Marble       |
| • 19 Tanzania       | • 39 Dream        |
| • 21 Istanbul       | • 40 True Grey    |
|                     | • 41 Bright White |

## FREIGHT CODE

L

## TESTING INFORMATION

- Passes 100,000 Wyzenbeek Double Rubs
- Passes NFPA 260
- Passes CAL 117
- Passes BS 5852 Source 0 & 1 with FR rated foam
- FR Treat to Pass BS 5862 Crib 5
- Breaking Strength & Elongation - ASTM D5034:  
Avg of Warp 372 lbs, Avg of Fill 494 lbs
- AATCC 16 Colorfastness to Light: 60 Hours, Class 3.0
- Must be treated to pass aviation standards

## CLEANING & CARE

- The surface of this leather is protected with a polyurethane top coat that will repel most common stains when blotted immediately.
- Clean spots with a slightly damp cloth and rub gently in circular motions only, so that the leather tipping does not get damaged.
- When spot cleaning, always test a small, inconspicuous part of the furniture in case of discoloration.
- Specific leather treatment products can be recommended for tougher stains.

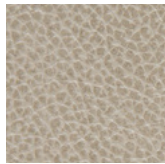
*(colorways continued on page 2...)*



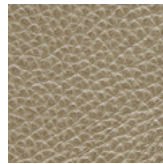
# HOLLY HUNT LEATHER



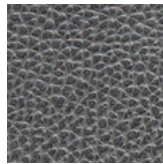
01 CHAMONIX



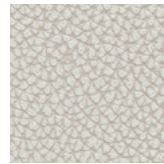
02 ST. MORTIZ



04 NEGRIL



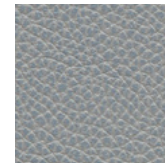
10 CAPRI



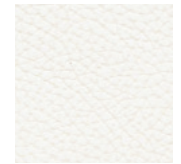
31 HIGHLANDS



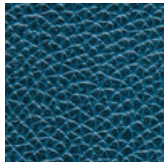
32 PORTO



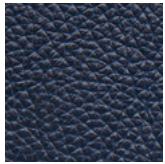
33 VERBIER



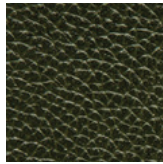
36 SWAN



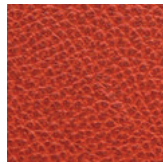
11 TURKS & CAICOS



12 FRENCH RIVIERA



13 MUSTIQUE



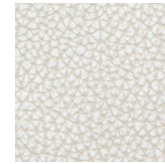
14 MYKONOS



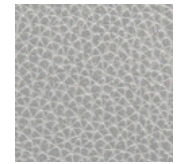
37 OPAL



38 MARBLE



39 DREAM



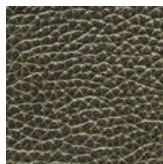
40 TRUE GREY



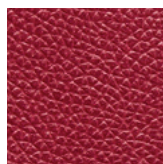
16 SEYCHELLES



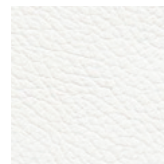
17 ANGUILLA



19 TANZANIA



21 ISTANBUL



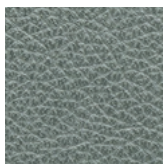
41 BRIGHT WHITE



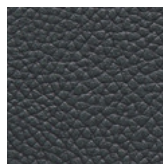
27 SUN VALLEY



28 GRAND CANYON



29 CAPE VERDE



30 STOCKHOLM